



A waterfront lifestyle like no other!

www.SemiahmooShore.com



STREET SIDE

9472 Turnstone Ln.

9470 Turnstone Ln.



WATERSIDE

9470 Turnstone Ln.

9472 Turnstone Ln.

**④3 9470 Turnstone Lane East
Harbor Shoreline
\$1,195,000***

Master Bedrooms: 2

Other Bedrooms: 2

Baths: 4.0

Approx. Sq. Ft.: 3,295

Levels: 2

Casitas: Yes

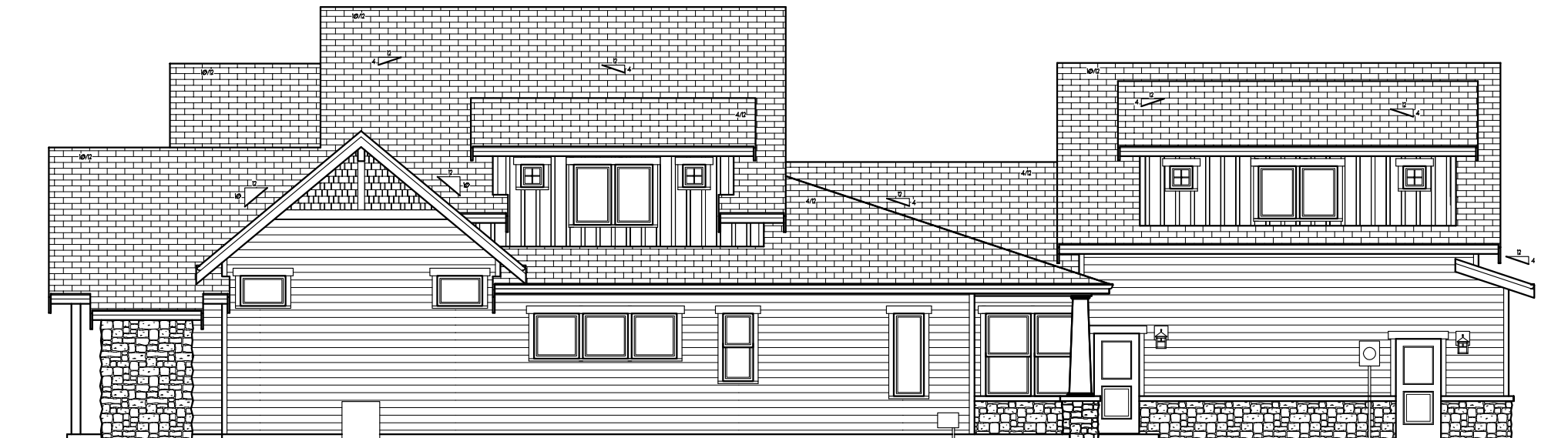
Den/Office: Yes

Bonus Room/Loft: No

Upper Balcony: Yes

Fireplaces: 2

2-Car Garage: Yes



SIDEVIEW

9470 Turnstone Ln.

*Prices subject to change. While every effort has been made to ensure the accuracy of this document, we are not responsible for any errors or omissions. Please verify all final information with your realtor.

Model Open Daily noon to 5 PM • **(360) 527-8901**



Semiahmoo Shore Model Home
9454 Turnstone Lane East • Blaine, WA 98230



A waterfront lifestyle like no other!

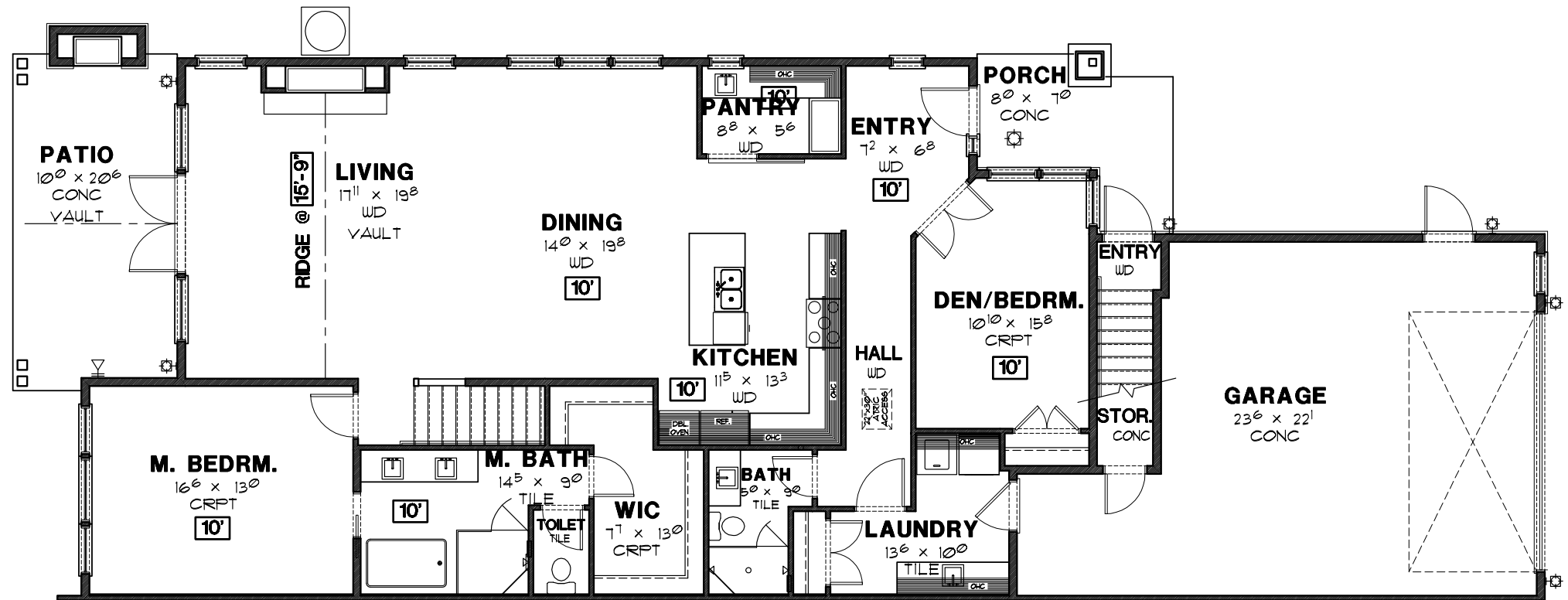
www.SemiahmooShore.com

43 9470 Turnstone Lane East Floor Plans

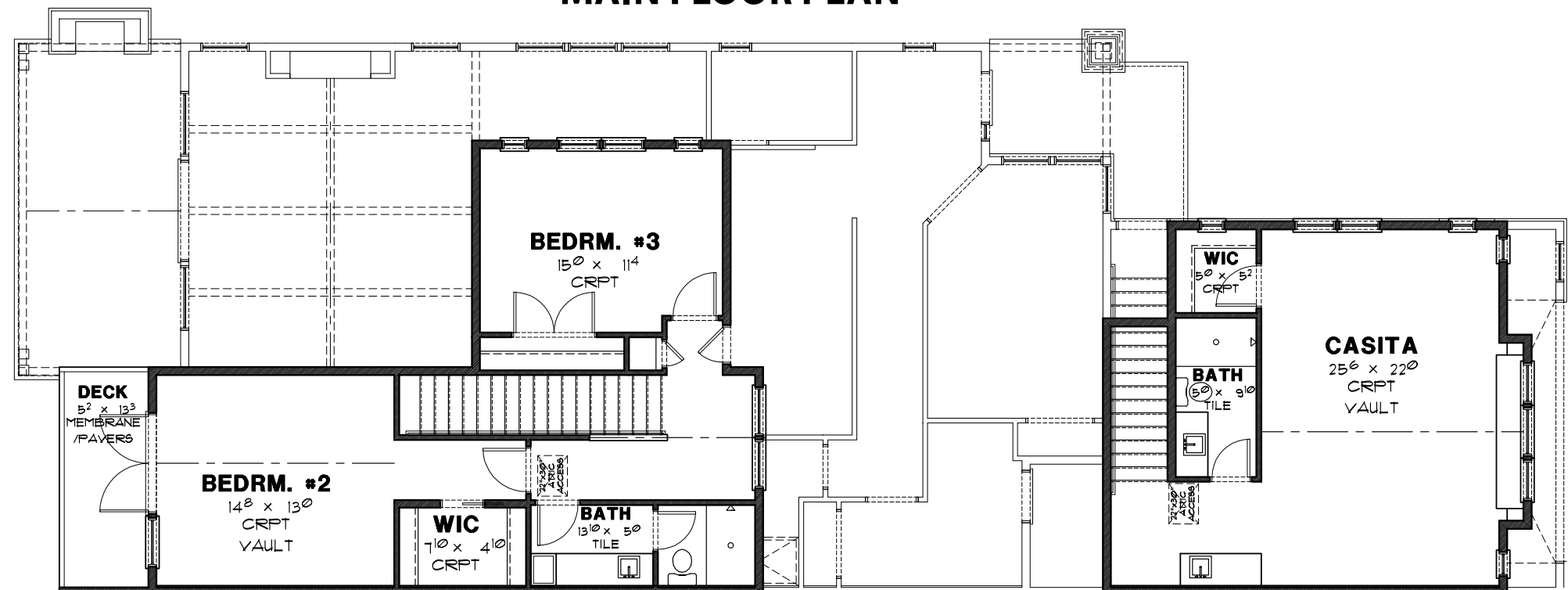
SQUARE FOOTAGE

Main Floor:	1,946 S.F.
Second Floor:	756 S.F.
Casita:	593 S.F.
Total:	3,295 S.F.

Garage:	666 S.F.
Covered Patio:	253 S.F.



MAIN FLOOR PLAN



SECOND FLOOR PLAN

*Prices subject to change. While every effort has been made to ensure the accuracy of this document, we are not responsible for any errors or omissions. Please verify all final information with your realtor.

Model Open Daily noon to 5 PM • (360) 527-8901



Semiahmoo Shore Model Home
9454 Turnstone Lane East • Blaine, WA 98230