



A waterfront lifestyle like no other!

www.SemiahmooShore.com



STREET SIDE

9468 Turnstone Ln.

9466 Turnstone Ln.



WATERSIDE

9466 Turnstone Ln.

9468 Turnstone Ln.

**42 9468 Turnstone Lane East
Harbor Shoreline
\$1,195,000***

Master Bedrooms: 1

Other Bedrooms: 2

Baths: 4

Approx. Sq. Ft.: 3,301

Levels: 2

Casitas: Yes

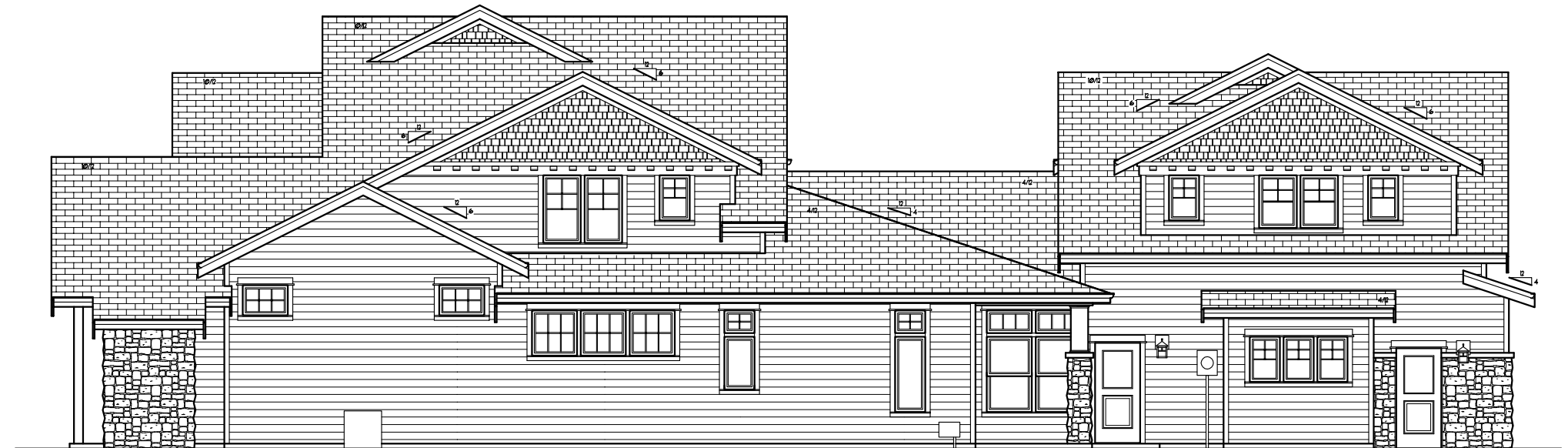
Den/Office: Yes

Bonus Room/Loft: Yes

Upper Balcony: Yes

Fireplaces: 2

2-Car Garage: Yes



SIDVIEW

9468 Turnstone Ln.

*Prices subject to change. While every effort has been made to ensure the accuracy of this document, we are not responsible for any errors or omissions. Please verify all final information with your realtor.

Model Open Daily noon to 5 PM • **(360) 527-8901**



Semiahmoo Shore Model Home
9454 Turnstone Lane East • Blaine, WA 98230



A waterfront lifestyle like no other!

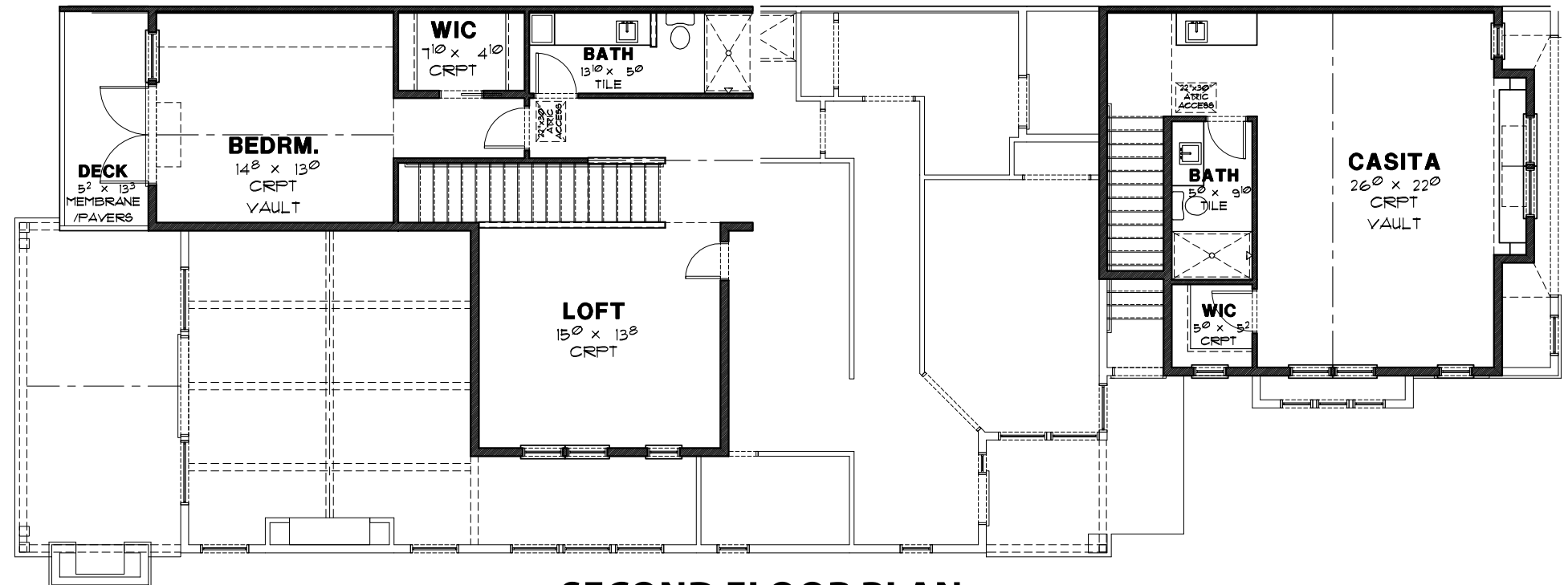
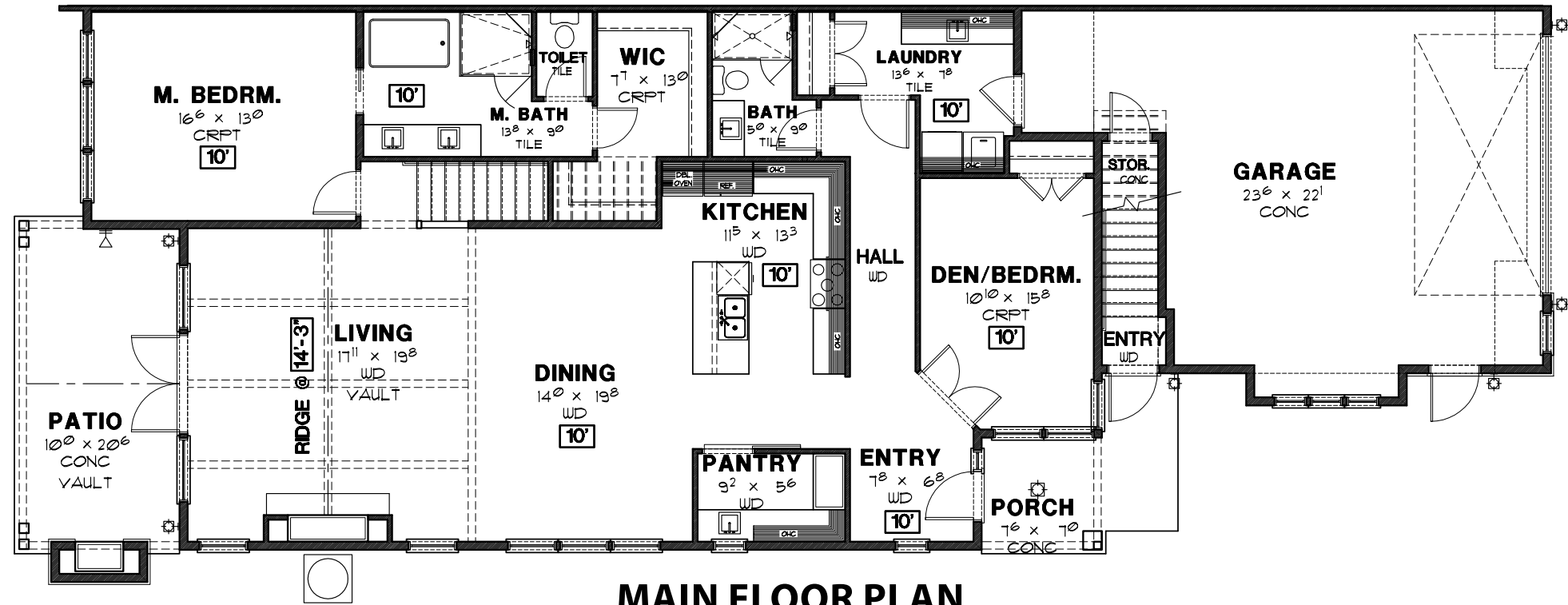
www.SemiahmooShore.com

42 9468 Turnstone Lane East Floor Plans

SQUARE FOOTAGE

Main Floor:	1,946 S.F.
Second Floor:	756 S.F.
Casita:	599 S.F.
Total:	3,301 S.F.

Garage:	686 S.F.
Covered Patio:	253 S.F.



*Prices subject to change. While every effort has been made to ensure the accuracy of this document, we are not responsible for any errors or omissions. Please verify all final information with your realtor.

Model Open Daily noon to 5 PM • (360) 527-8901



Semiahmoo Shore Model Home
9454 Turnstone Lane East • Blaine, WA 98230