



A waterfront lifestyle like no other!

www.SemiahmooShore.com



**STREET SIDE**

**9454 Turnstone Ln.**

9452 Turnstone Ln.



**WATERSIDE**

9452 Turnstone Ln.

**9454 Turnstone Ln.**

**ⓑ Model Home  
Floor Plans  
\$1,195,000\***

Master Bedrooms: 2

Other Bedrooms: 0

Baths: 4.5

Approx. Sq. Ft.: 2,952

Levels: 2

Casitas: No

Den/Office: Yes

Bonus Room/Loft: Yes

Upper Balcony: Yes

Fireplaces: 2

2-Car Garage: Yes



**SIDEVIEW**

**9454 Turnstone Ln.**

\*Prices subject to change. While every effort has been made to ensure the accuracy of this document, we are not responsible for any errors or omissions. Please verify all final information with your realtor.

Model Open Daily noon to 5 PM • **(360) 527-8901**



Semiahmoo Shore Model Home  
9454 Turnstone Lane East • Blaine, WA 98230



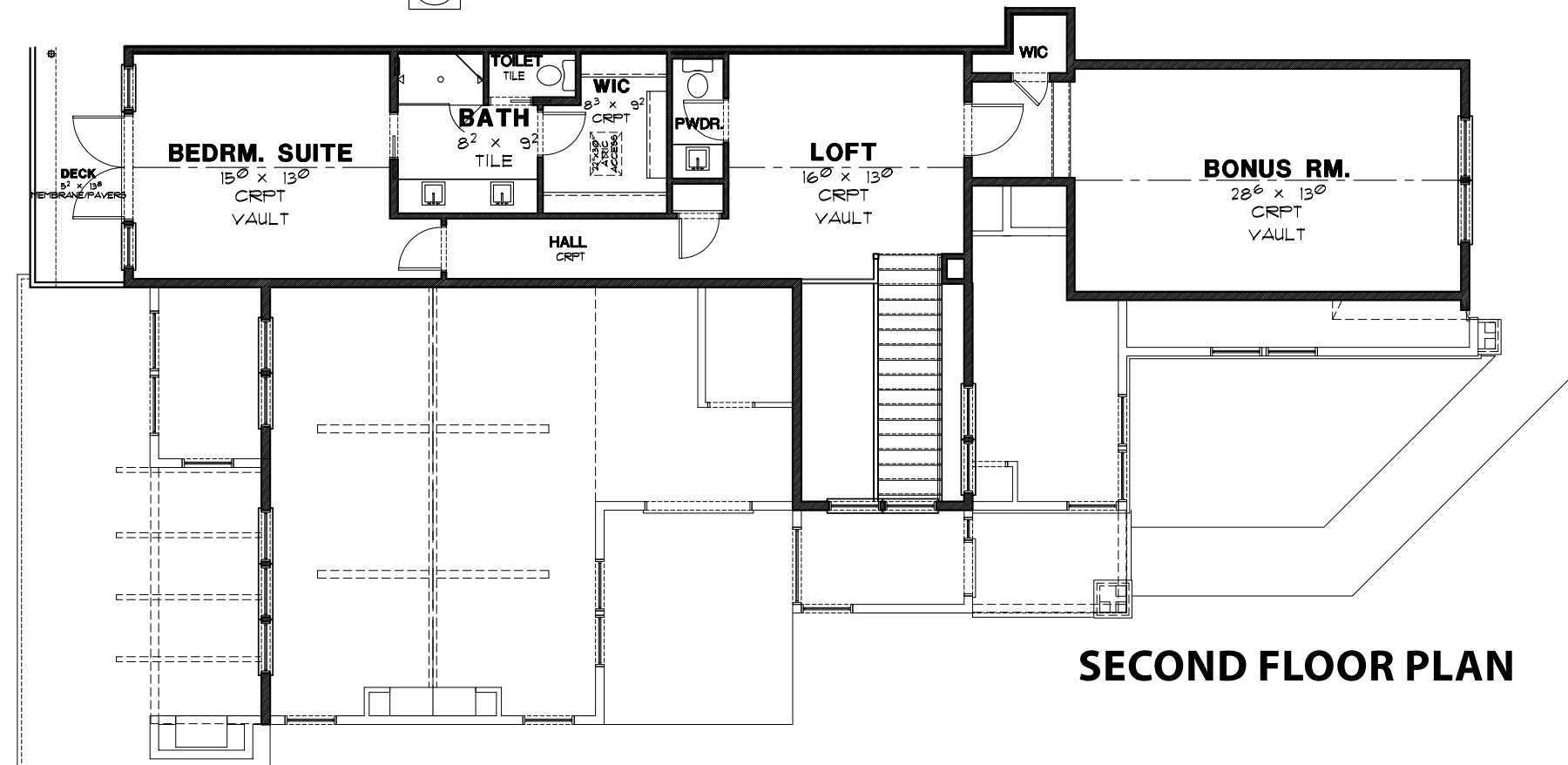
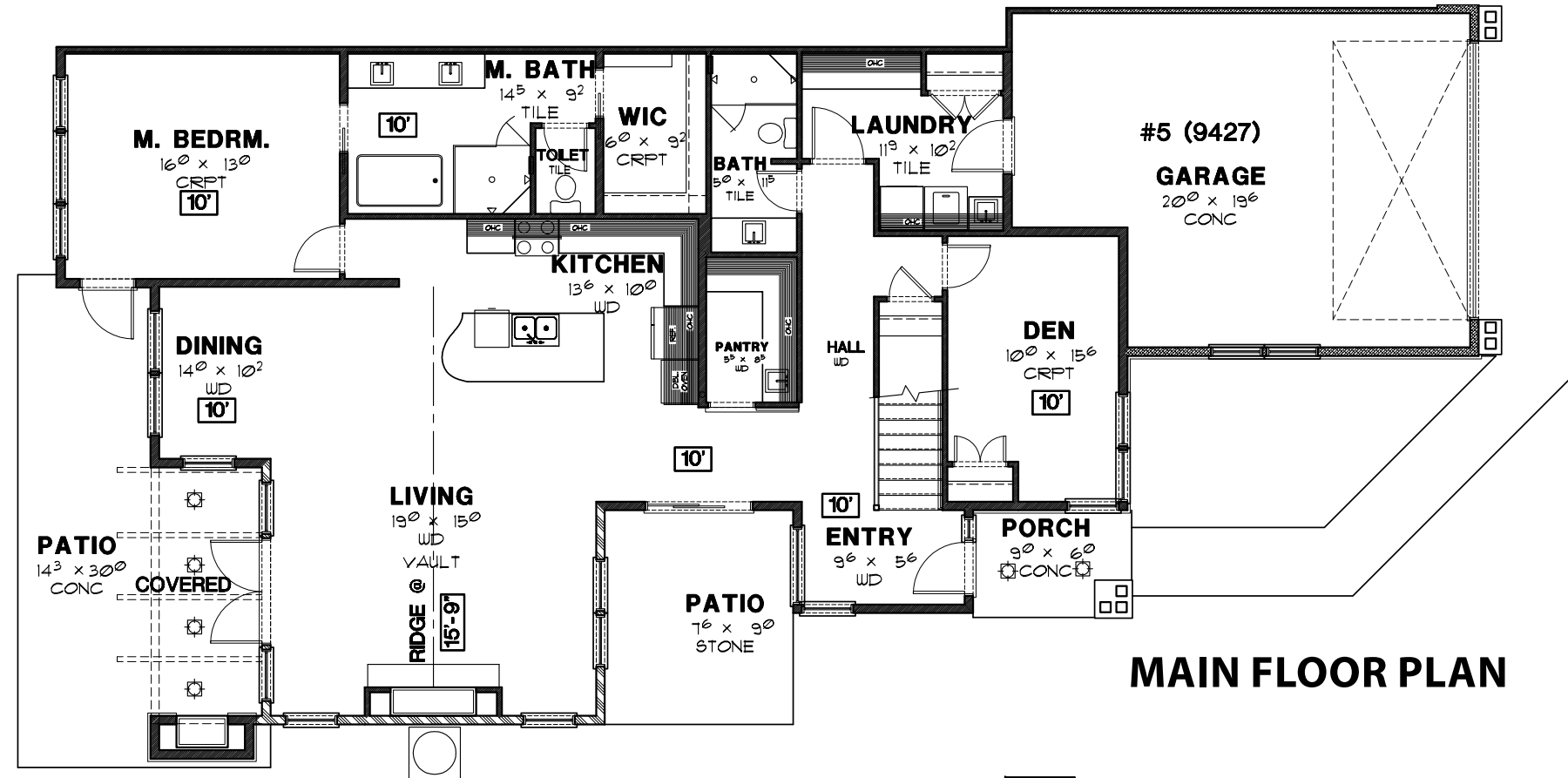
A waterfront lifestyle like no other!  
[www.SemiahmooShore.com](http://www.SemiahmooShore.com)

## B Model Home Floor Plans

### SQUARE FOOTAGE

Main Floor:	1,846 S.F.
Second Floor:	1,106 S.F.
<b>Total:</b>	<b>2,952 S.F.</b>

Garage:	505 S.F.
Covered Patio:	152 S.F.



\*Prices subject to change. While every effort has been made to ensure the accuracy of this document, we are not responsible for any errors or omissions. Please verify all final information with your realtor.

Model Open Daily noon to 5 PM • (360) 527-8901



Semiahmoo Shore Model Home  
 9454 Turnstone Lane East • Blaine, WA 98230