



A waterfront lifestyle like no other!

www.SemiahmooShore.com



STREET SIDE

9454 Turnstone Ln.

9452 Turnstone Ln.



WATERSIDE

9452 Turnstone Ln.

9454 Turnstone Ln.

**(A) Model Home
Floor Plans
\$1,195,000***

Master Bedrooms: 2
Other Bedrooms: 0
Baths: 4.5
Approx. Sq. Ft.: 3,001
Levels: 2
Casitas: No

Den/Office: Yes
Bonus Room/Loft: Yes
Upper Balcony: Yes
Fireplaces: 2
2-Car Garage: Yes



SIDEVIEW

9452 Turnstone Ln.

*Prices subject to change. While every effort has been made to ensure the accuracy of this document, we are not responsible for any errors or omissions. Please verify all final information with your realtor.

Model Open Daily noon to 5 PM • **(360) 527-8901**



Semiahmoo Shore Model Home
9454 Turnstone Lane East • Blaine, WA 98230



A waterfront lifestyle like no other!

www.SemiahmooShore.com

A Model Home Floor Plans

SQUARE FOOTAGE

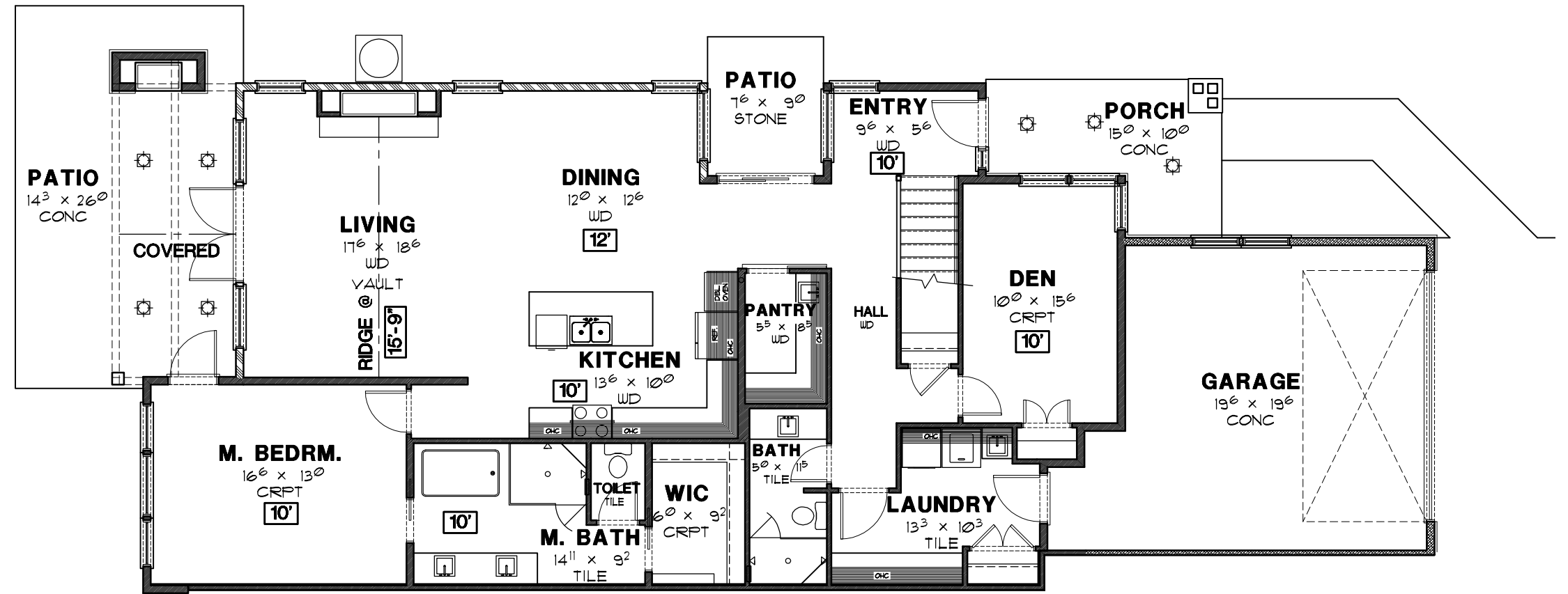
Main Floor: 1,826 S.F.

Second Floor: 1,175 S.F.

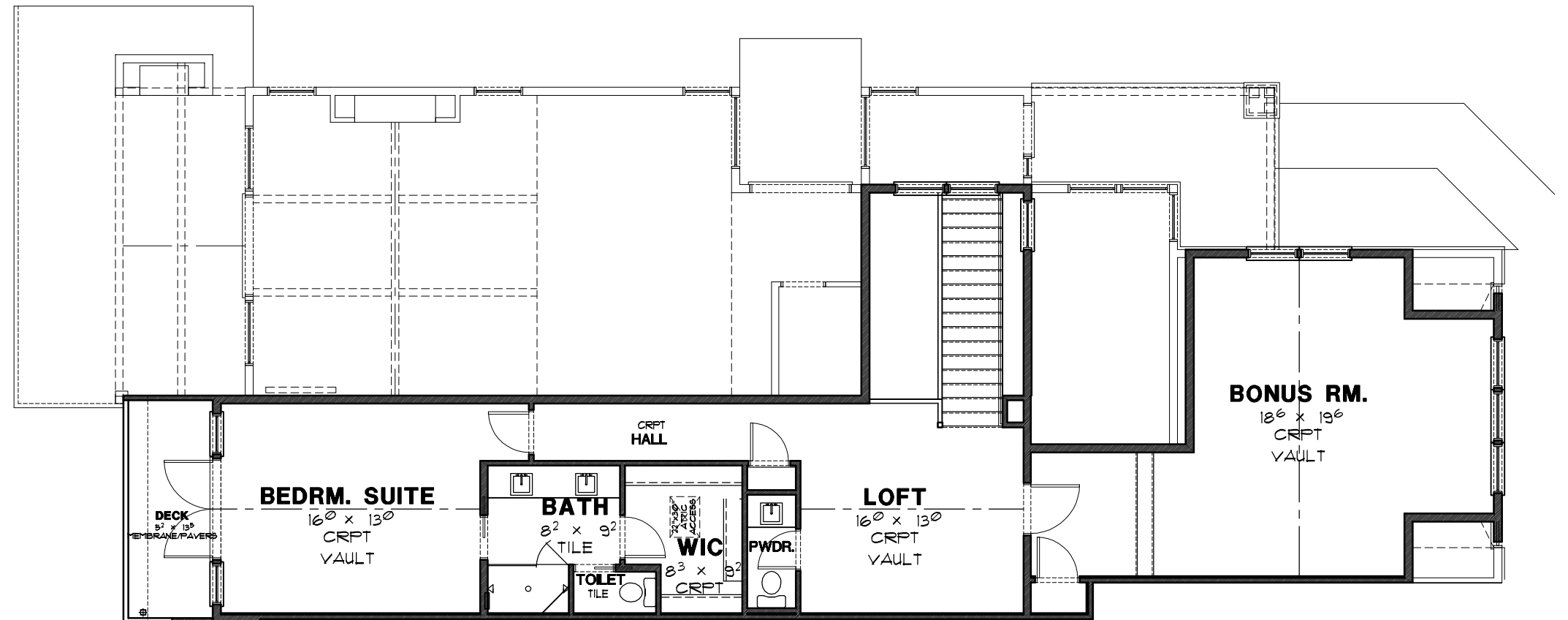
Total: 3,001 S.F.

Garage: 446 S.F.

Covered Patio: 267 S.F.



MAIN FLOOR PLAN



SECOND FLOOR PLAN

*Prices subject to change. While every effort has been made to ensure the accuracy of this document, we are not responsible for any errors or omissions. Please verify all final information with your realtor.

Model Open Daily noon to 5 PM • (360) 527-8901



Semiahmoo Shore Model Home
9454 Turnstone Lane East • Blaine, WA 98230