



A waterfront lifestyle like no other!

www.SemiahmooShore.com



STREET SIDE

9438 Turnstone Ln.

9436 Turnstone Ln.



WATERSIDE

9436 Turnstone Ln.

9438 Turnstone Ln.

36 9438 Turnstone Lane

Interior

\$875,000*

Master Bedrooms: 1

Other Bedrooms: 2

Baths: 3.5

Approx. Sq. Ft.: 2,427

Levels: 2

Casitas: No

Den/Office: Yes

Bonus Room/Loft: Yes

Upper Balcony: Yes

Fireplaces: 1

2-Car Garage: Yes

*Prices subject to change. While every effort has been made to ensure the accuracy of this document, we are not responsible for any errors or omissions. Please verify all final information with your realtor.

Model Open Daily noon to 5 PM • **(360) 527-8901**



SIDEVIEW

9438 Turnstone Ln.



Semiahmoo Shore Model Home
9454 Turnstone Lane East • Blaine, WA 98230



A waterfront lifestyle like no other!

www.SemiahmooShore.com

36 9438 Turnstone Lane Floor Plans

SQUARE FOOTAGE

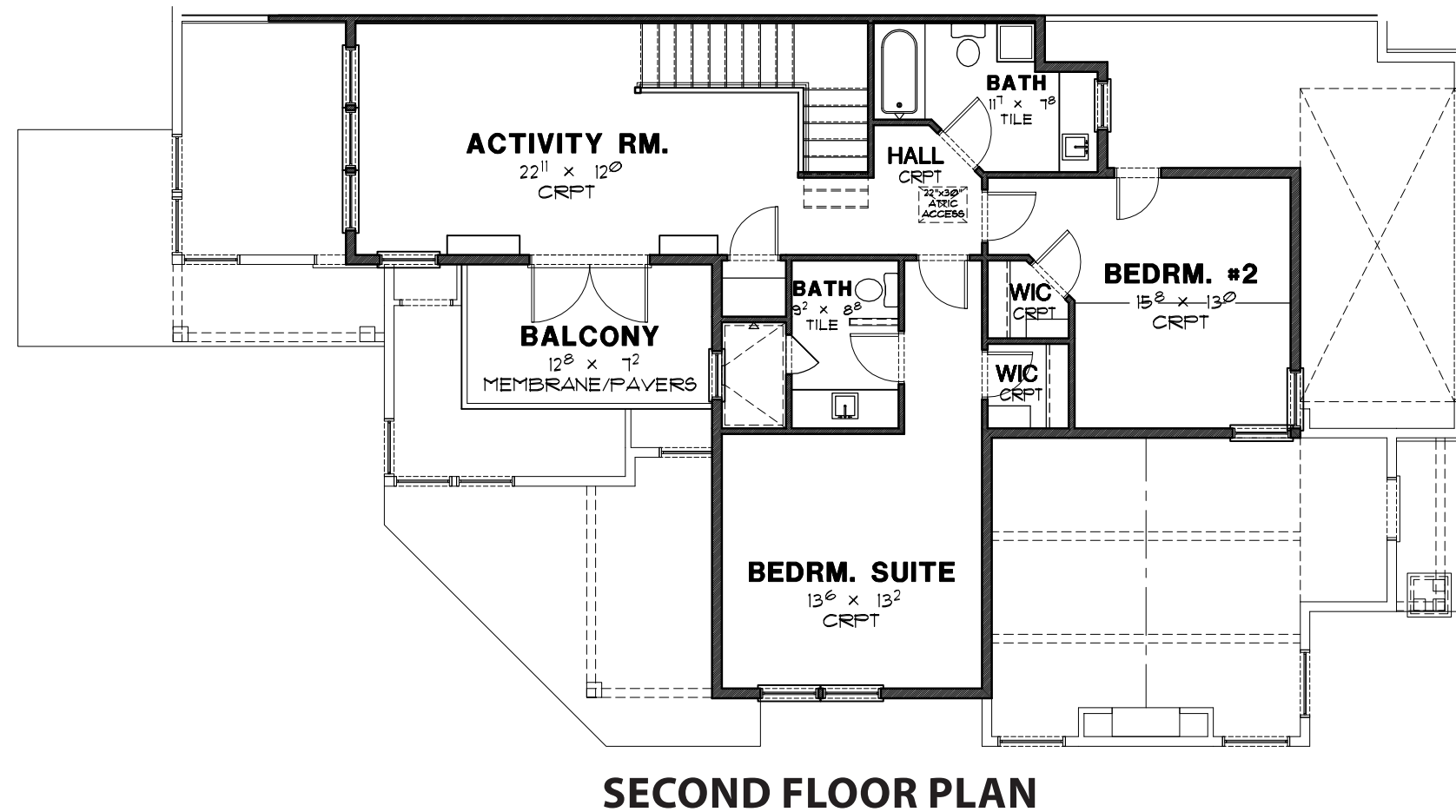
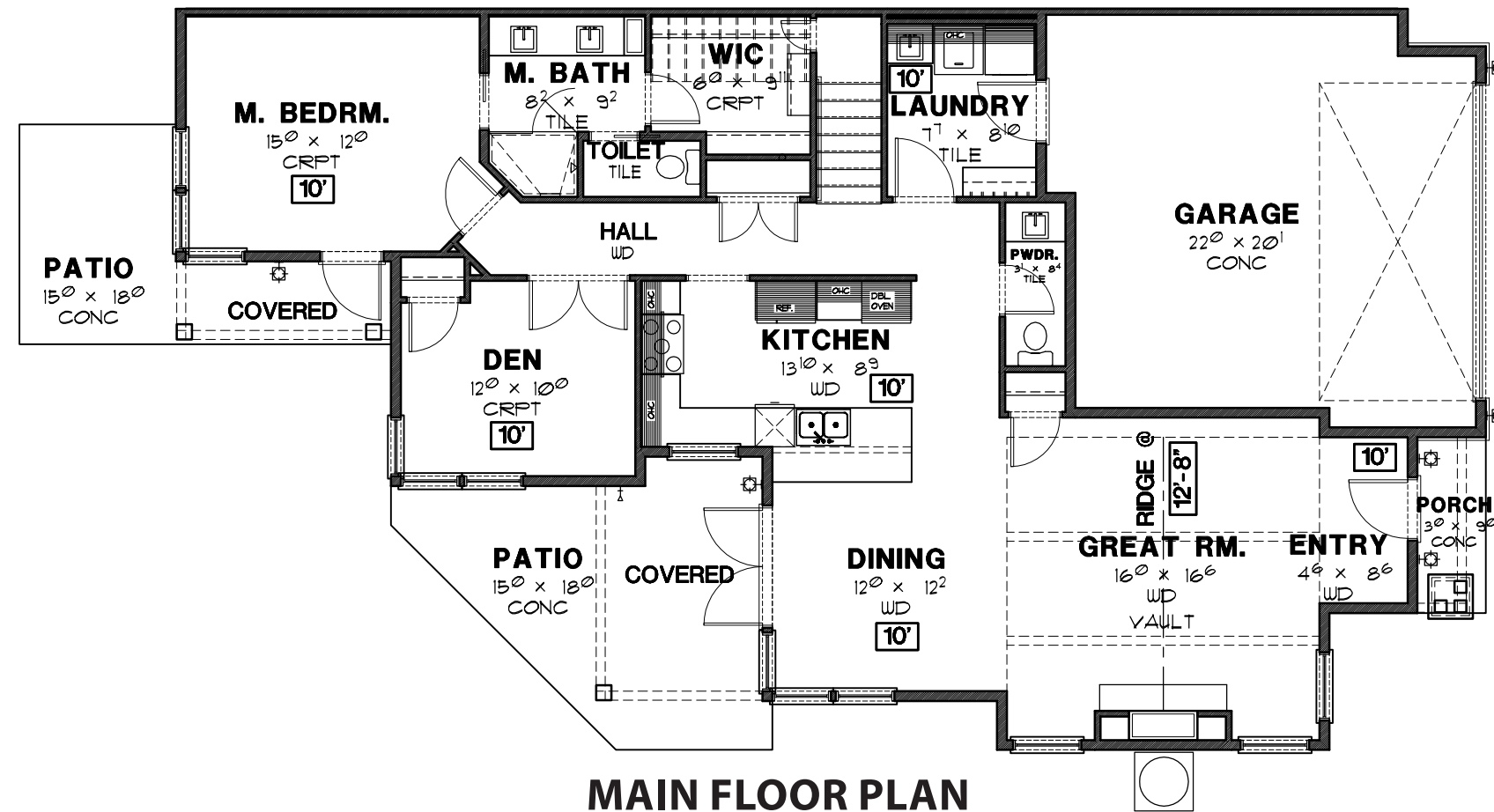
Main Floor: 1,429 S.F.

Second Floor: 998 S.F.

Total: 2,427 S.F.

Garage: 445 S.F.

Covered Patio: 169 S.F.



*Prices subject to change. While every effort has been made to ensure the accuracy of this document, we are not responsible for any errors or omissions. Please verify all final information with your realtor.

Model Open Daily noon to 5 PM • (360) 527-8901



Semiahmoo Shore Model Home
9454 Turnstone Lane East • Blaine, WA 98230