



A waterfront lifestyle like no other!

www.SemiahmooShore.com



STREET SIDE

9416 Turnstone Ln.

9418 Turnstone Ln.



WATERSIDE 9418 Turnstone Ln.

9416 Turnstone Ln.

35 9418 Turnstone Lane
Interior
\$825,000*

Master Bedrooms: 1

Other Bedrooms: 2

Baths: 2.5

Approx. Sq. Ft.: 2,187

Levels: 2

Casitas: No

Den/Office: No

Bonus Room/Loft: Yes

Upper Balcony: No

Fireplaces: 1

2-Car Garage: Yes



SIDEVIEW 9418 Turnstone Ln.

*Prices subject to change. While every effort has been made to ensure the accuracy of this document, we are not responsible for any errors or omissions. Please verify all final information with your realtor.

Model Open Daily noon to 5 PM • **(360) 527-8901**



Semiahmoo Shore Model Home
 9454 Turnstone Lane East • Blaine, WA 98230



A waterfront lifestyle like no other!

www.SemiahmooShore.com

**35 9418 Turnstone Lane
Floor Plans**

SQUARE FOOTAGE

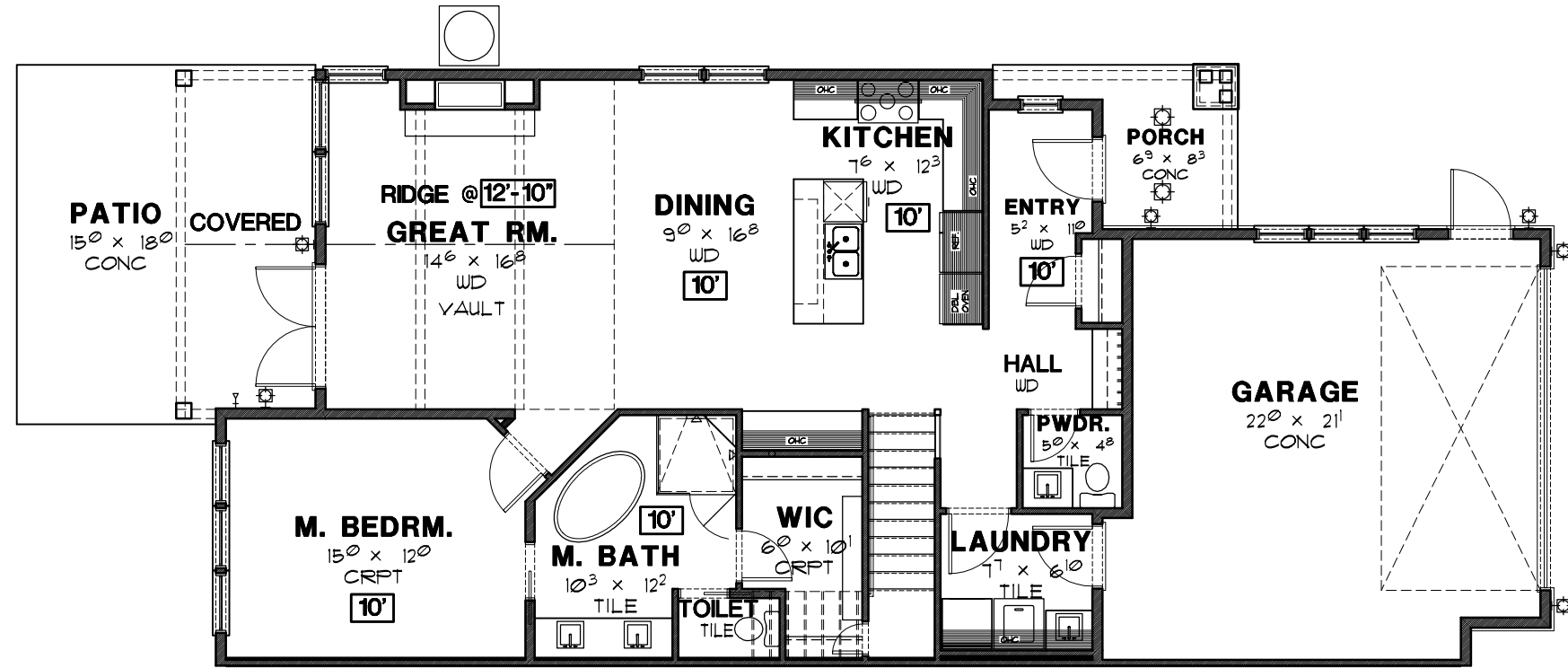
Main Floor: 1,259 S.F.

Second Floor: 928 S.F.

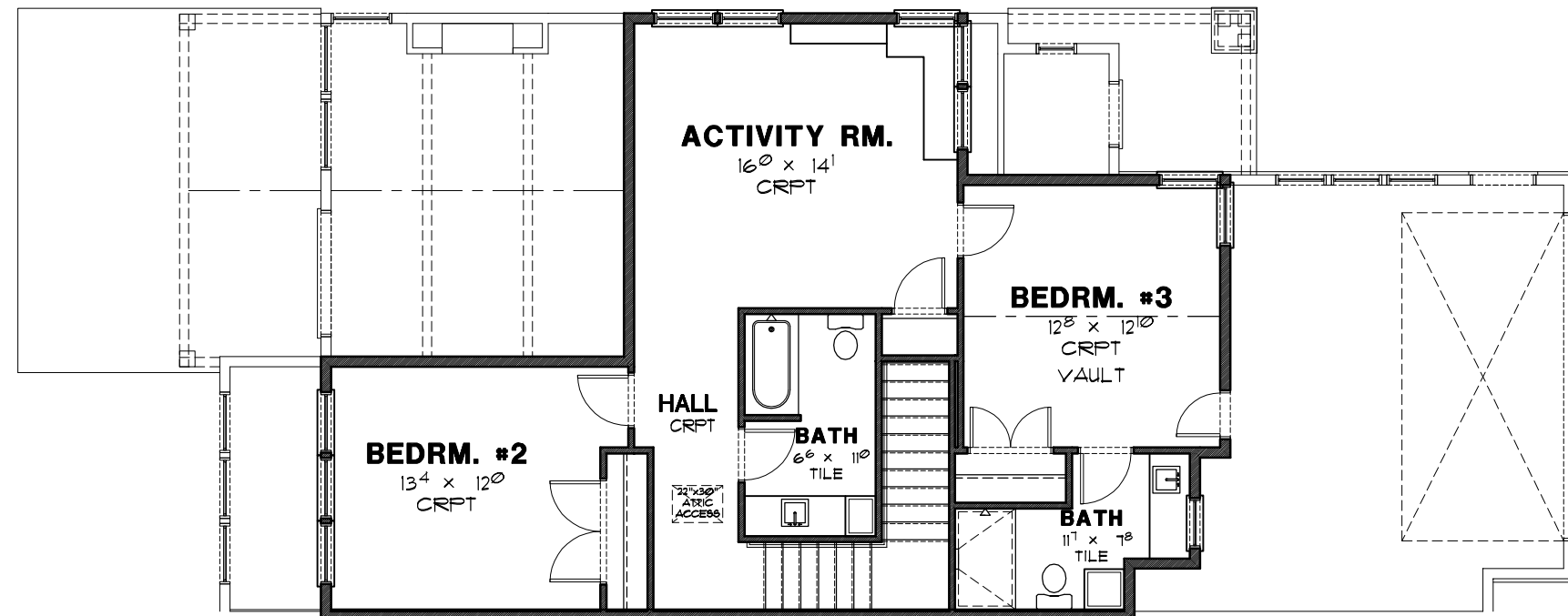
Total: 2,187 S.F.

Garage: 464 S.F.

Covered Patio: 180 S.F.



MAIN FLOOR PLAN



SECOND FLOOR PLAN

*Prices subject to change. While every effort has been made to ensure the accuracy of this document, we are not responsible for any errors or omissions. Please verify all final information with your realtor.

Model Open Daily noon to 5 PM • (360) 527-8901



Semiahmoo Shore Model Home
9454 Turnstone Lane East • Blaine, WA 98230