



A waterfront lifestyle like no other!

www.SemiahmooShore.com



STREET SIDE

9430 Turnstone Ln.

9428 Turnstone Ln.



WATERSIDE

9428 Turnstone Ln.

9430 Turnstone Ln.

32 9430 Turnstone Lane

Interior

\$825,000*

Master Bedrooms: 1

Other Bedrooms: 2

Baths: 2.5

Approx. Sq. Ft.: 2,187

Levels: 2

Casitas: No

Den/Office: No

Bonus Room/Loft: Yes

Upper Balcony: No

Fireplaces: 1

2-Car Garage: Yes

*Prices subject to change. While every effort has been made to ensure the accuracy of this document, we are not responsible for any errors or omissions. Please verify all final information with your realtor.

Model Open Daily noon to 5 PM • **(360) 527-8901**



Semiahmoo Shore Model Home
9454 Turnstone Lane East • Blaine, WA 98230



SIDEVIEW

9430 Turnstone Ln.



A waterfront lifestyle like no other!

www.SemiahmooShore.com

32 9430 Turnstone Lane Floor Plans

SQUARE FOOTAGE

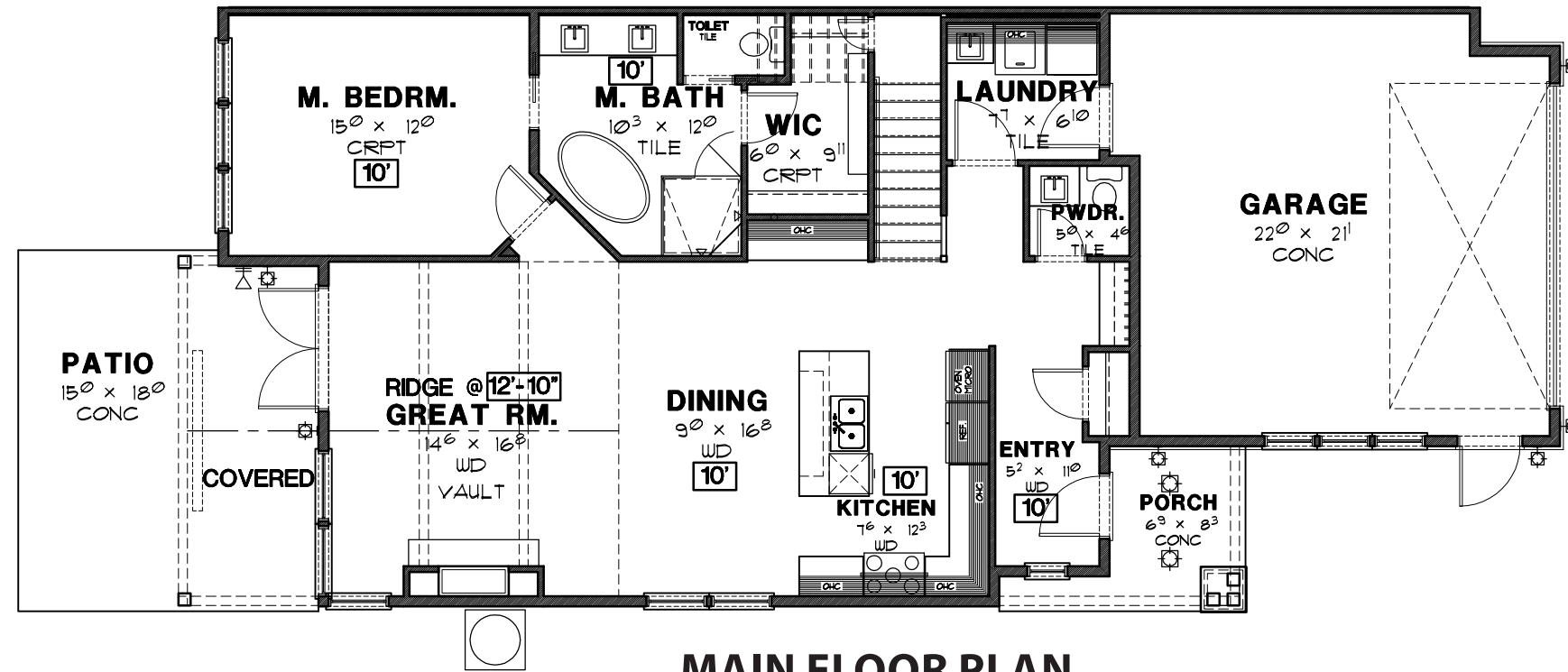
Main Floor: 1,259 S.F.

Second Floor: 928 S.F.

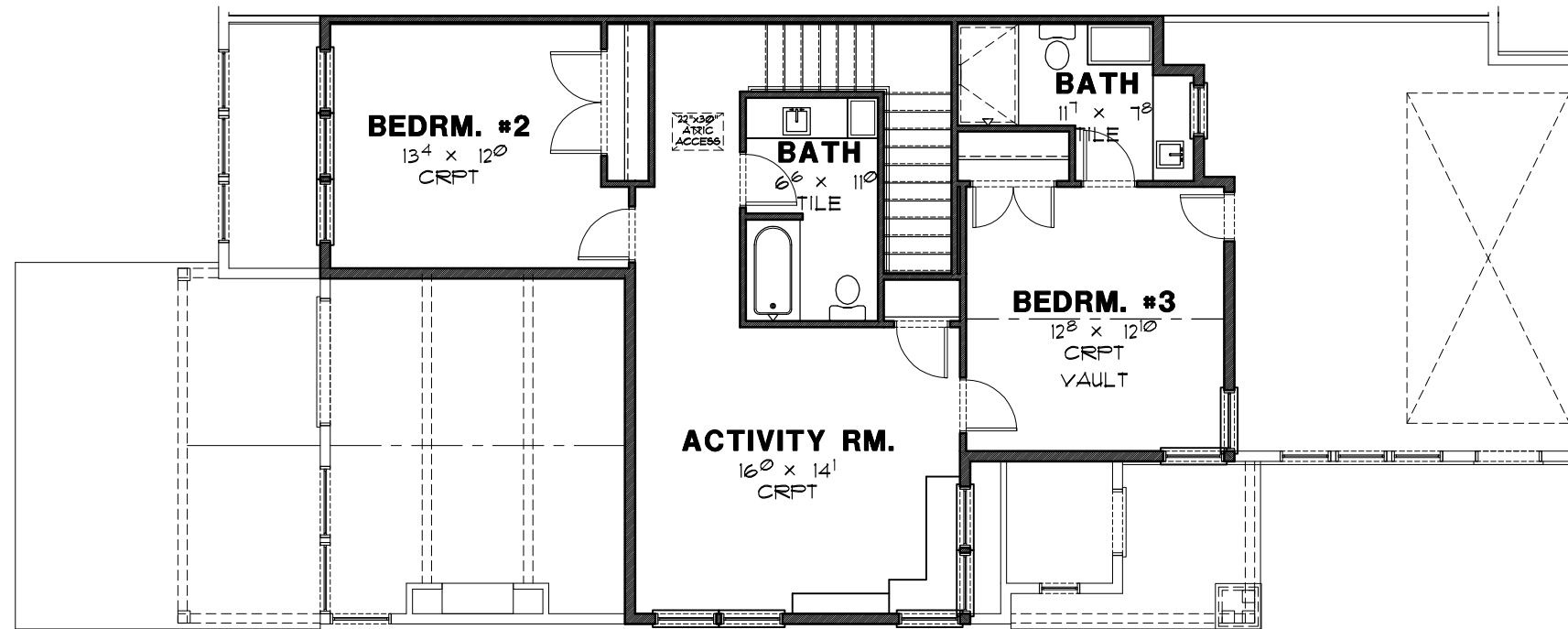
Total: 2,187 S.F.

Garage: 464 S.F.

Covered Patio: 180 S.F.



MAIN FLOOR PLAN



SECOND FLOOR PLAN

*Prices subject to change. While every effort has been made to ensure the accuracy of this document, we are not responsible for any errors or omissions. Please verify all final information with your realtor.

Model Open Daily noon to 5 PM • (360) 527-8901



Semiahmoo Shore Model Home
9454 Turnstone Lane East • Blaine, WA 98230