



A waterfront lifestyle like no other!

www.SemiahmooShore.com



STREET SIDE

9428 Turnstone Ln.

9430 Turnstone Ln.



WATERSIDE

9430 Turnstone Ln.

9428 Turnstone Ln.

29 9430 Turnstone Lane

Interior

\$795,000*

Master Bedrooms: 1

Den/Office: No

Other Bedrooms: 2

Bonus Room/Loft: Yes

Baths: 2.5

Upper Balcony: No

Approx. Sq. Ft.: 2,025

Fireplaces: 1

Levels: 2

2-Car Garage: Yes

Casitas: No



SIDEVIEW

9430 Turnstone Ln.

*Prices subject to change. While every effort has been made to ensure the accuracy of this document, we are not responsible for any errors or omissions. Please verify all final information with your realtor.

Model Open Daily noon to 5 PM • (360) 527-8901



Semiahmoo Shore Model Home
9454 Turnstone Lane East • Blaine, WA 98230



A waterfront lifestyle like no other!

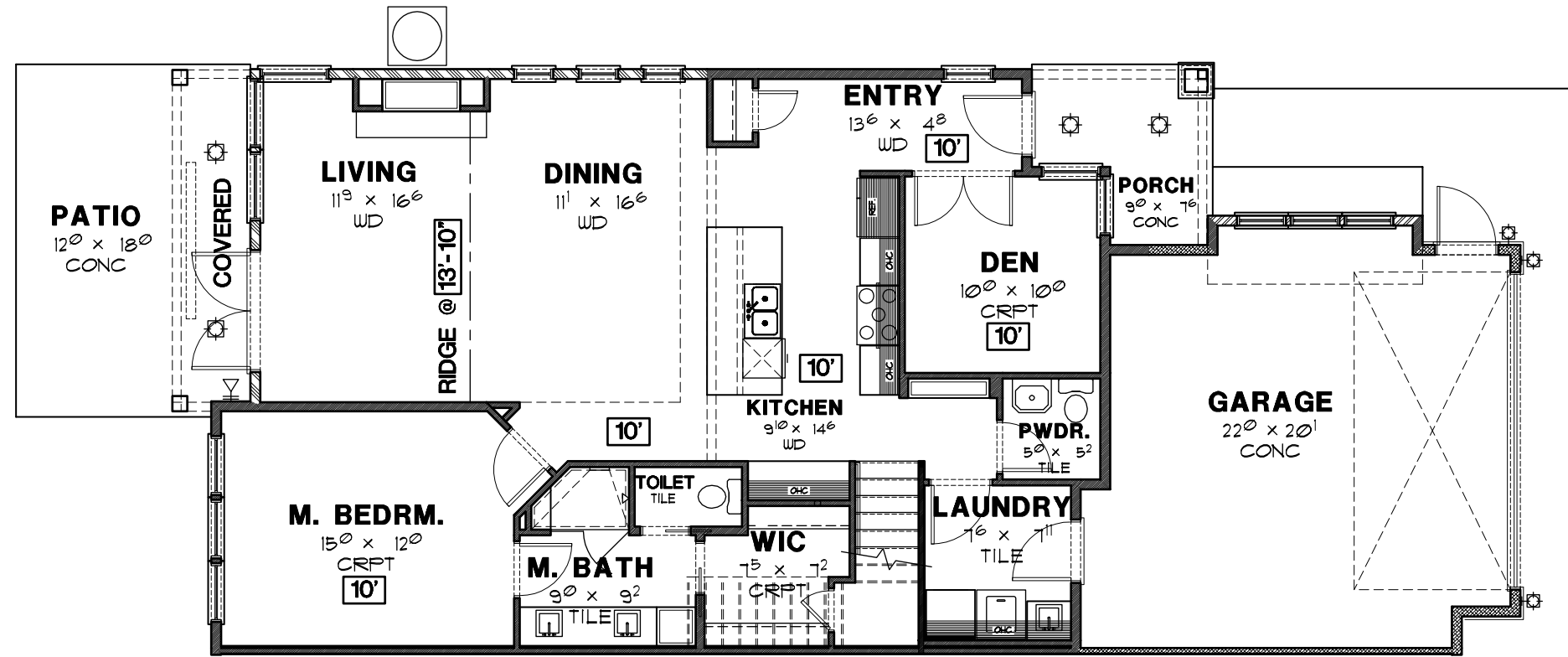
www.SemiahmooShore.com

**29 9430 Turnstone Lane
Floor Plans**

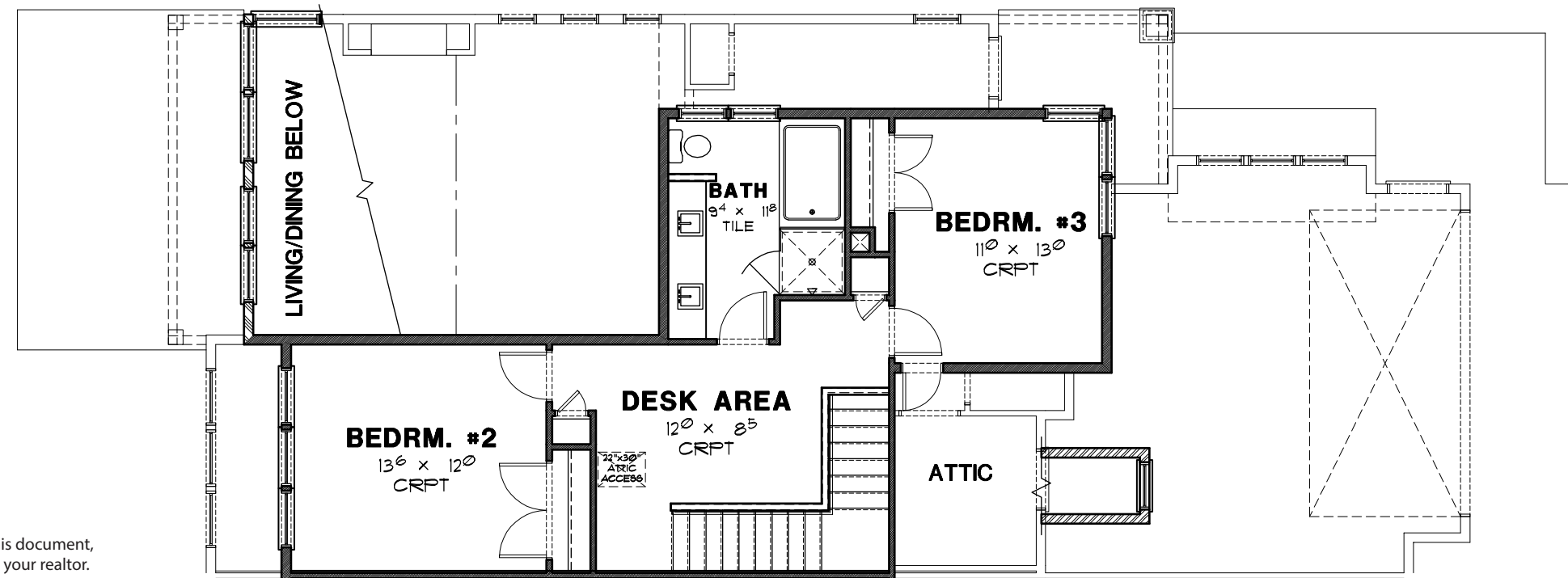
SQUARE FOOTAGE

Main Floor:	1,313 S.F.
Second Floor:	712 S.F.
Total:	2,025 S.F.

Garage:	464 S.F.
Covered Patio:	134 S.F.



MAIN FLOOR PLAN



SECOND FLOOR PLAN

*Prices subject to change. While every effort has been made to ensure the accuracy of this document, we are not responsible for any errors or omissions. Please verify all final information with your realtor.

Model Open Daily noon to 5 PM • (360) 527-8901



Semiahmoo Shore Model Home
9454 Turnstone Lane East • Blaine, WA 98230