



A waterfront lifestyle like no other!

www.SemiahmooShore.com



STREET SIDE

9436 Turnstone Ln.

9438 Turnstone Ln.



WATERSIDE

9438 Turnstone Ln.

9436 Turnstone Ln.

25 9438 Turnstone Lane

Interior

\$825,000*

Master Bedrooms: 1

Den/Office: No

Other Bedrooms: 2

Bonus Room/Loft: No

Baths: 2.5

Upper Balcony: No

Approx. Sq. Ft.: 2,025

Fireplaces: 1

Levels: 2

2-Car Garage: Yes

Casitas: No

*Prices subject to change. While every effort has been made to ensure the accuracy of this document, we are not responsible for any errors or omissions. Please verify all final information with your realtor.

Model Open Daily noon to 5 PM • **(360) 527-8901**



SIDEVIEW

9438 Turnstone Ln.



Semiahmoo Shore Model Home
9454 Turnstone Lane East • Blaine, WA 98230



A waterfront lifestyle like no other!

www.SemiahmooShore.com

**25 9438 Turnstone Lane
Floor Plans**

SQUARE FOOTAGE

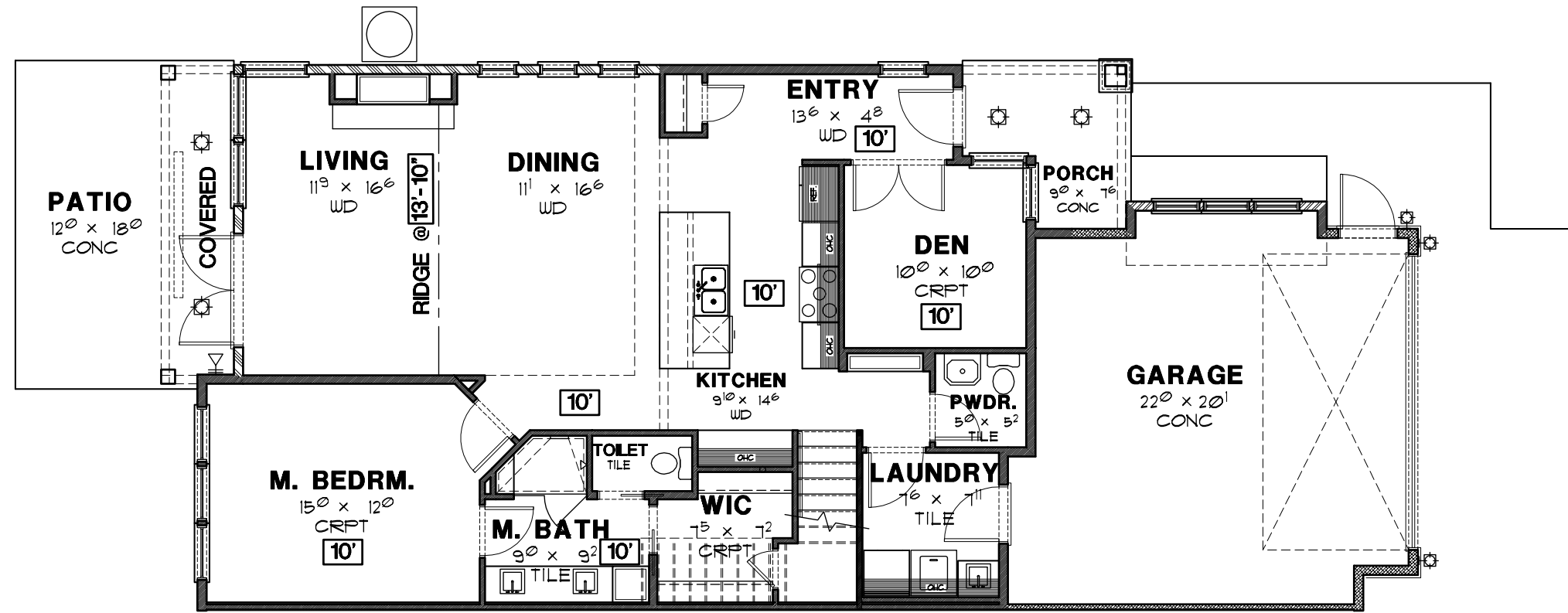
Main Floor: 1,313 S.F.

Second Floor: 712 S.F.

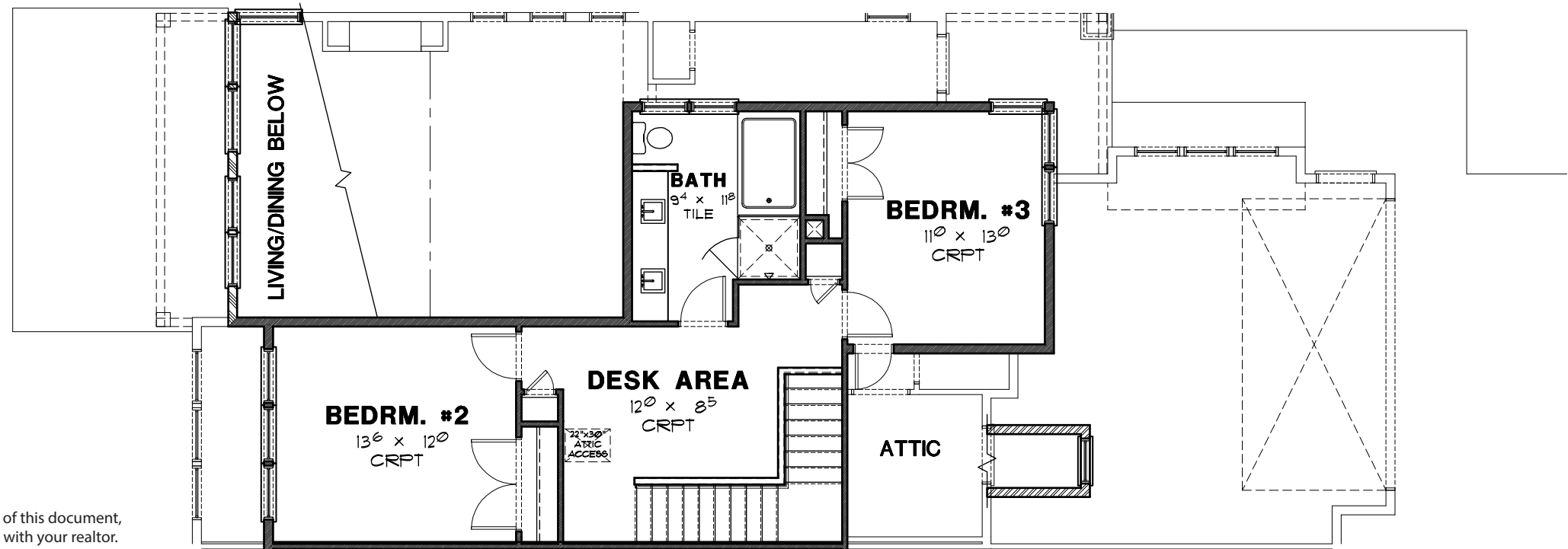
Total: 2,025 S.F.

Garage: 464 S.F.

Covered Patio: 134 S.F.



MAIN FLOOR PLAN



SECOND FLOOR PLAN

*Prices subject to change. While every effort has been made to ensure the accuracy of this document, we are not responsible for any errors or omissions. Please verify all final information with your realtor.

Model Open Daily noon to 5 PM • (360) 527-8901



Semiahmoo Shore Model Home
9454 Turnstone Lane East • Blaine, WA 98230