



A waterfront lifestyle like no other!

www.SemiahmooShore.com



STREET SIDE

9412 Turnstone Ln.

9410 Turnstone Ln.



WATERSIDE

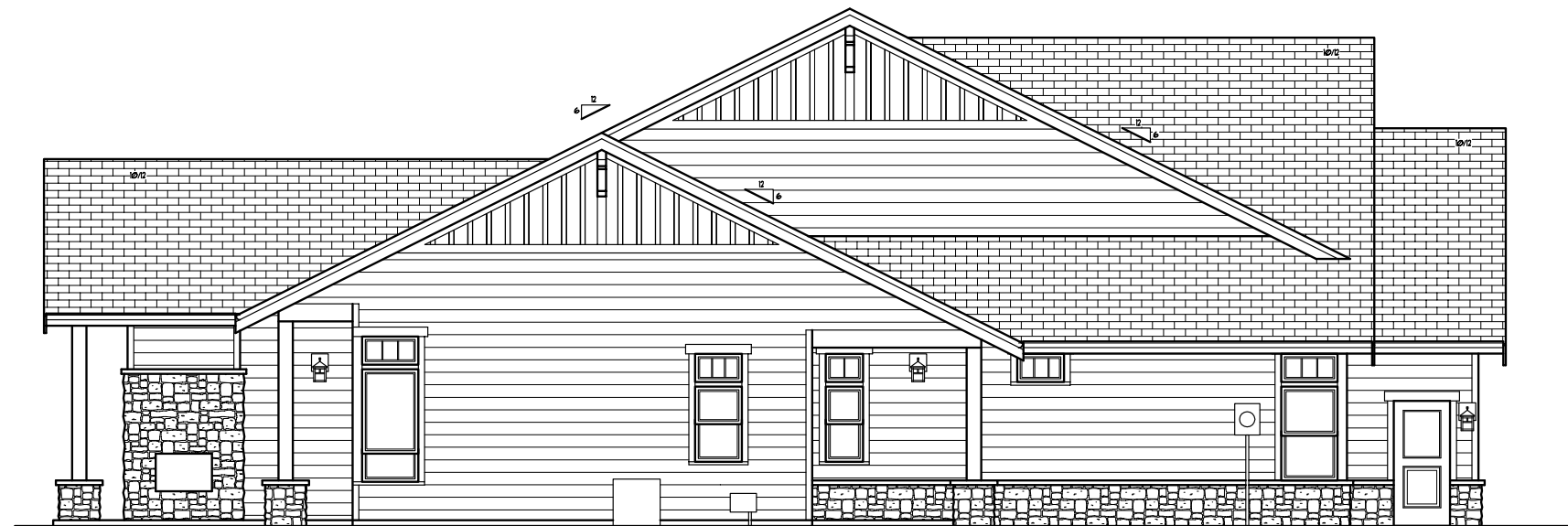
9410 Turnstone Ln.

9412 Turnstone Ln.

24 9412 Turnstone Lane
Interior - Cul de Sac
\$875,000*

Master Bedrooms: 1
Other Bedrooms: 2
Baths: 3.0
Approx. Sq. Ft.: 2,333
Levels: 1
Casitas: No

Den/Office: No
Bonus Room/Loft: No
Upper Balcony: No
Fireplaces: 2
2-Car Garage: Yes



SIDEVIEW

9412 Turnstone Ln.

*Prices subject to change. While every effort has been made to ensure the accuracy of this document, we are not responsible for any errors or omissions. Please verify all final information with your realtor.

Model Open Daily noon to 5 PM • **(360) 527-8901**



Semiahmoo Shore Model Home
9454 Turnstone Lane East • Blaine, WA 98230



A waterfront lifestyle like no other!

www.SemiahmooShore.com

24 9412 Turnstone Lane Floor Plans

SQUARE FOOTAGE

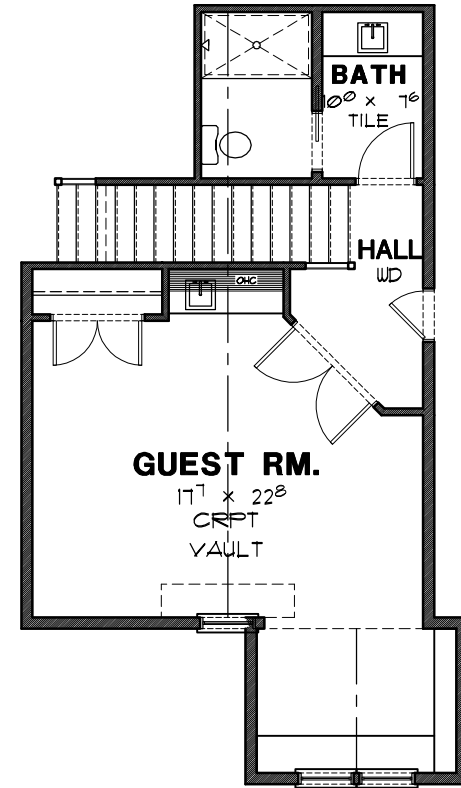
Main Floor: 1,840 S.F.

Second Floor: 493 S.F.

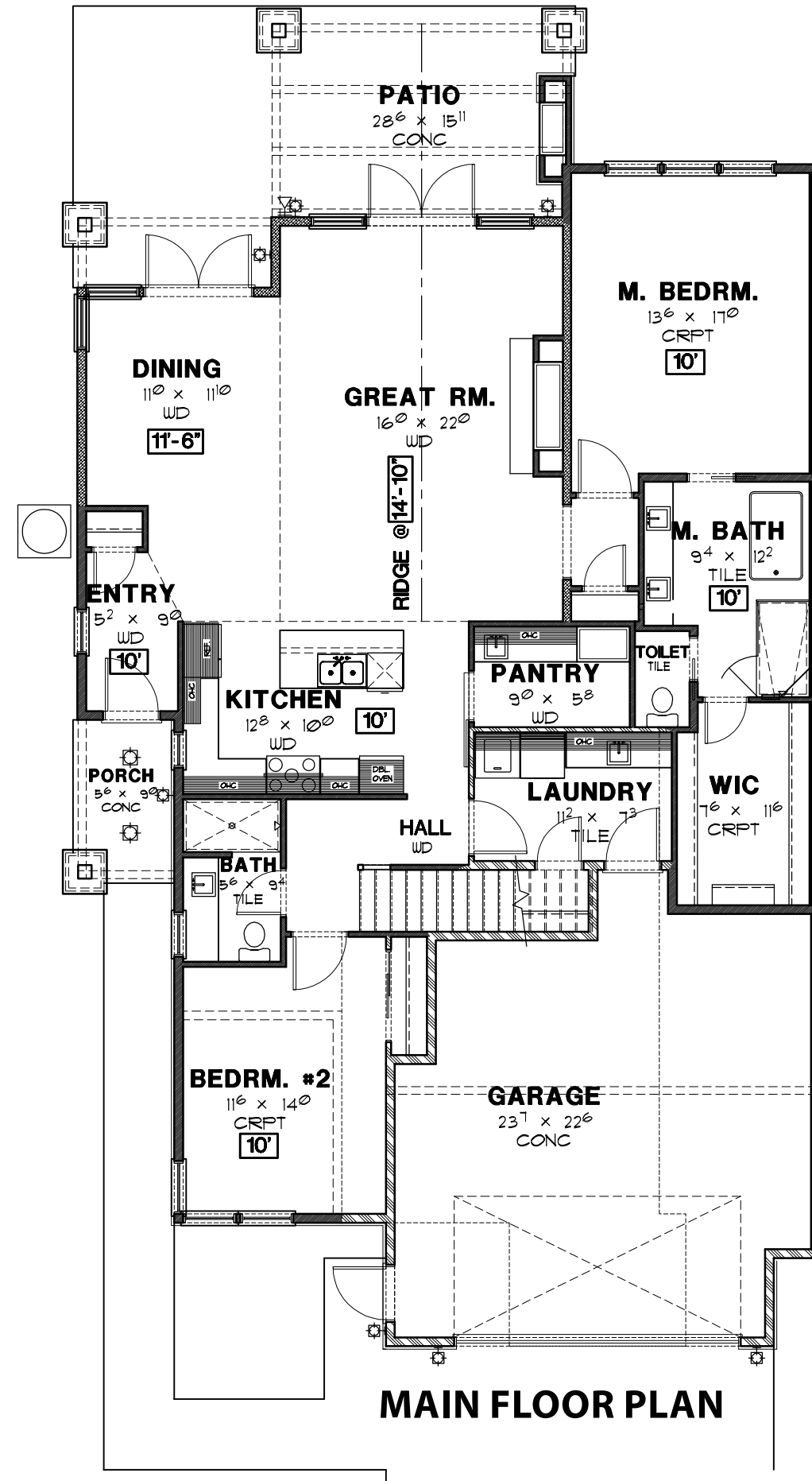
Total: 2,333 S.F.

Garage: 555 S.F.

Covered Patio: 244 S.F.



SECOND FLOOR PLAN



MAIN FLOOR PLAN

*Prices subject to change. While every effort has been made to ensure the accuracy of this document, we are not responsible for any errors or omissions. Please verify all final information with your realtor.

Model Open Daily noon to 5 PM • (360) 527-8901



Semiahmoo Shore Model Home
9454 Turnstone Lane East • Blaine, WA 98230