



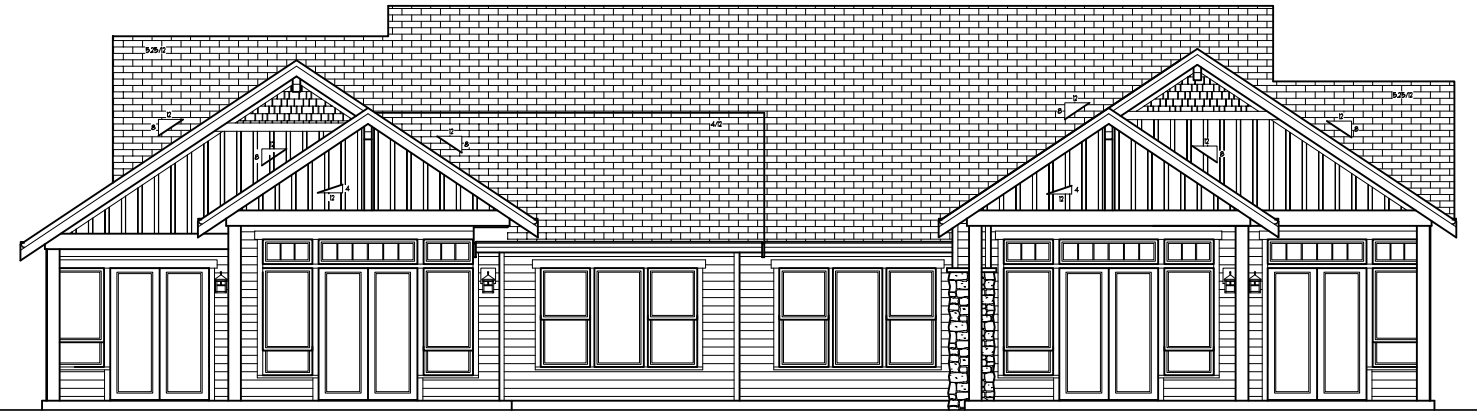
A waterfront lifestyle like no other!

www.SemiahmooShore.com



STREET SIDE 9408 Turnstone Ln.

9406 Turnstone Ln.



WATERSIDE 9406 Turnstone Ln.

9408 Turnstone Ln.

21 9406 Turnstone Lane
Cul de Sac
\$825,000*

Master Bedrooms: 1
Other Bedrooms: 2
Baths: 3.0
Approx. Sq. Ft.: 2,179
Levels: 2
Casitas: No

Den/Office: Yes
Bonus Room/Loft: No
Upper Balcony: No
Fireplaces: 2
2-Car Garage: Yes



SIDEVIEW 9406 Turnstone Ln.

*Prices subject to change. While every effort has been made to ensure the accuracy of this document, we are not responsible for any errors or omissions. Please verify all final information with your realtor.

Model Open Daily noon to 5 PM • **(360) 527-8901**



Semiahmoo Shore Model Home
9454 Turnstone Lane East • Blaine, WA 98230



A waterfront lifestyle like no other!
www.SemiahmooShore.com

**21 9406 Turnstone Lane
Floor Plans**

SQUARE FOOTAGE

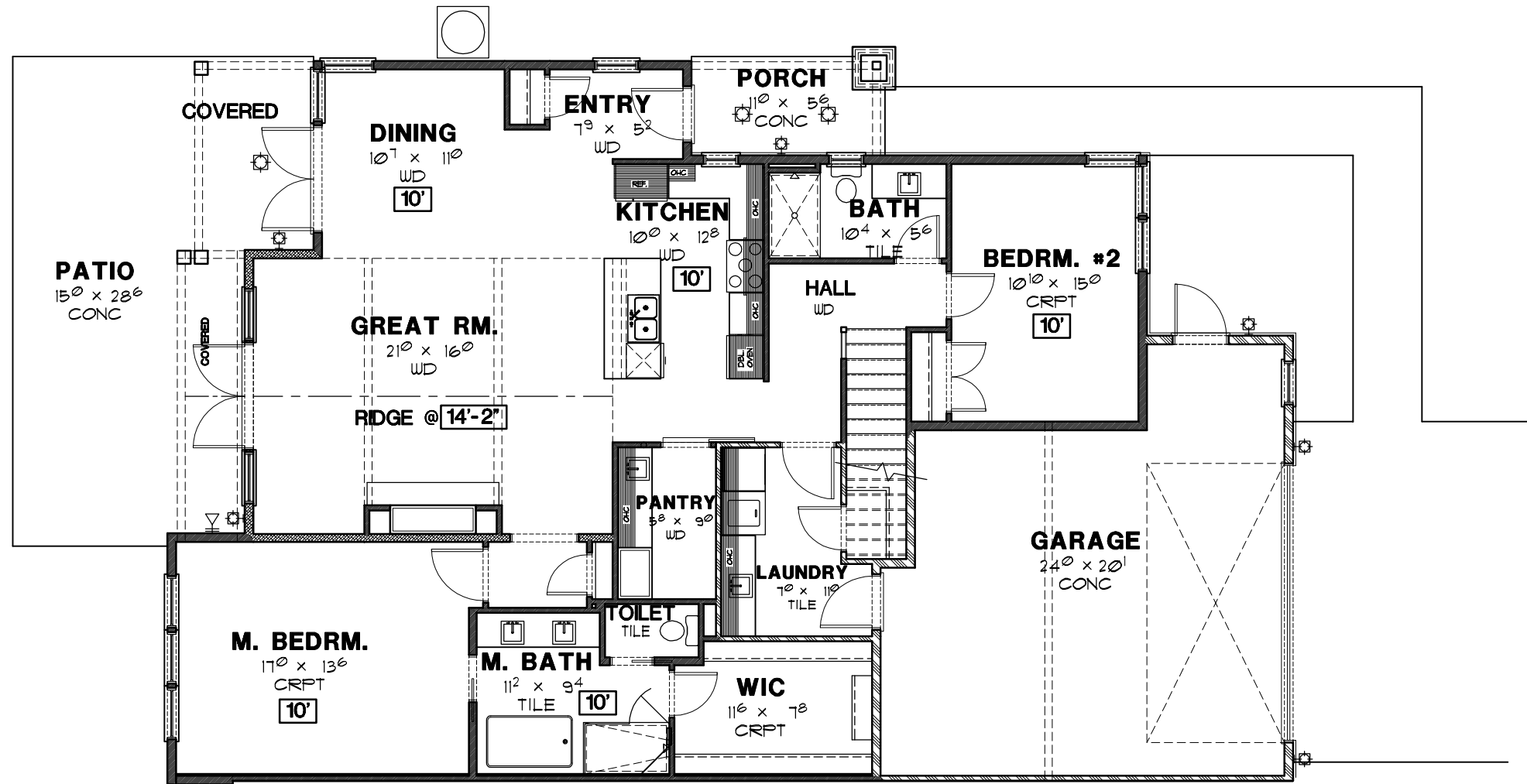
Main Floor: 1,779 S.F.

Second Floor: 400 S.F.

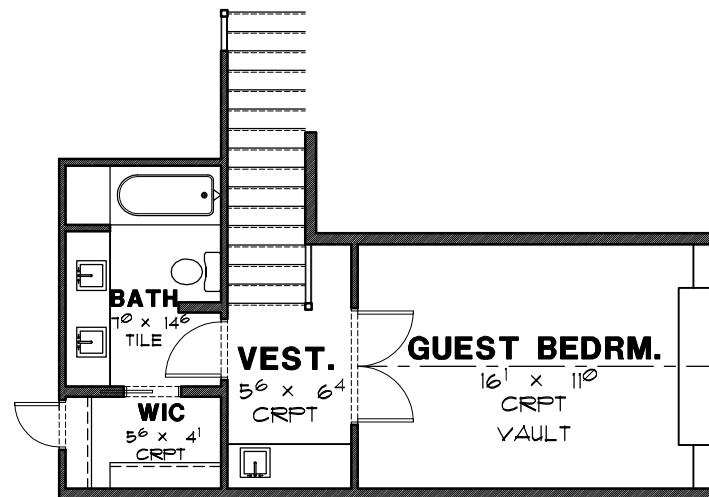
Total: 2,179 S.F.

Garage: 523 S.F.

Covered Patio: 201 S.F.



MAIN FLOOR PLAN



SECOND FLOOR PLAN

*Prices subject to change. While every effort has been made to ensure the accuracy of this document, we are not responsible for any errors or omissions. Please verify all final information with your realtor.

Model Open Daily noon to 5 PM • (360) 527-8901



Semiahmoo Shore Model Home
9454 Turnstone Lane East • Blaine, WA 98230