



A waterfront lifestyle like no other!

www.SemiahmooShore.com



**STREET SIDE**

**9468 Turnstone Ln.**

9466 Turnstone Ln.



**WATERSIDE**

9466 Turnstone Ln.

**9468 Turnstone Ln.**

**④ 9468 Turnstone Lane**

**Exterior**

**\$1,095,000\***

Master bedrooms: 1

Den/Office: No

Other Bedrooms: 2

Bonus Room/Loft: No

Baths: 3.5

Upper Balcony: Yes

Approx. Sq. Ft.: 2,670

Fireplaces: 2

Levels: 2

2-Car Garage: Yes

Casita: Yes



**SIDEVIEW**

**9468 Turnstone Ln.**

\*Prices subject to change. While every effort has been made to ensure the accuracy of this document, we are not responsible for any errors or omissions. Please verify all final information with your realtor.

Model Open Daily noon to 5 PM • **(360) 527-8901**

**#42 (9468)**



Semiahmoo Shore Model Home  
9454 Turnstone Lane East • Blaine, WA 98230



A waterfront lifestyle like no other!

www.SemiahmooShore.com

## 42 9468 Turnstone Lane Floor Plans

### SQUARE FOOTAGE

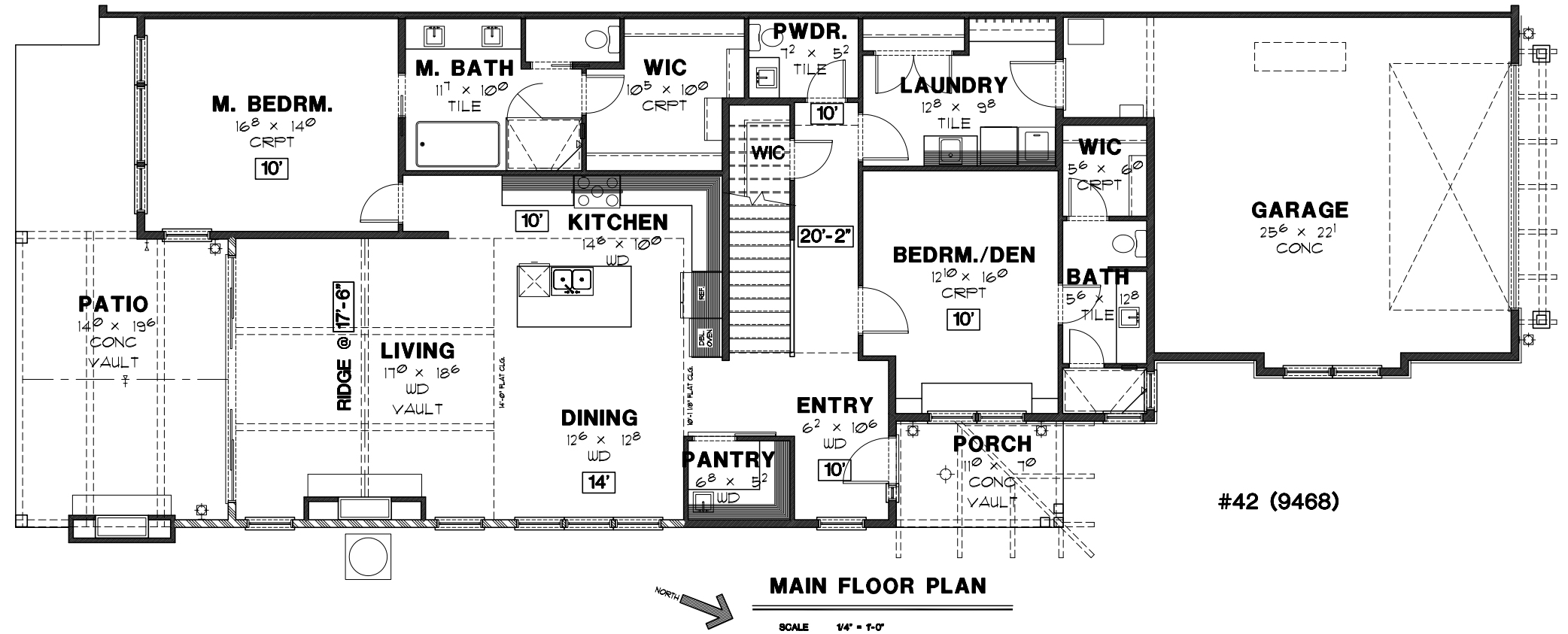
Main Floor: 2,003 S.F.

Second Floor: 667 S.F.

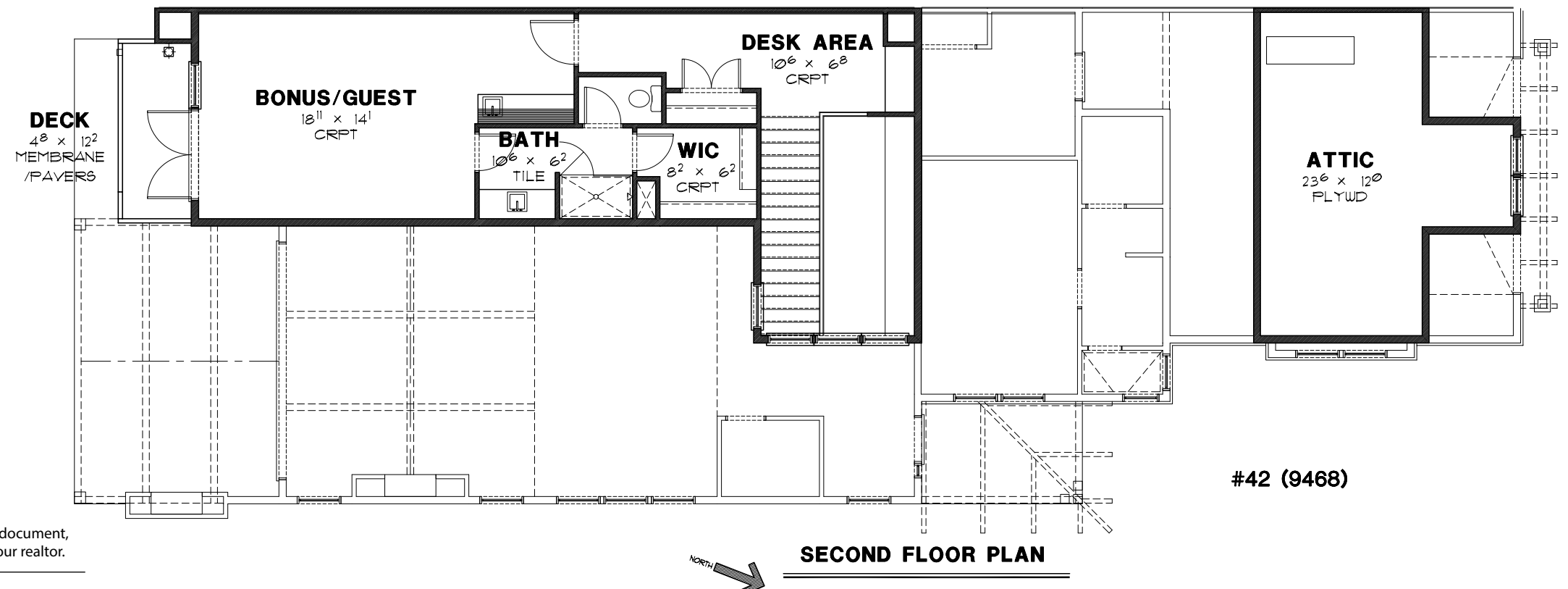
Total: 2,670 S.F.

Garage: 604 S.F.

Covered Patio: 414 S.F.



#42 (9468)



#42 (9468)

\*Prices subject to change. While every effort has been made to ensure the accuracy of this document, we are not responsible for any errors or omissions. Please verify all final information with your realtor.

Model Open Daily noon to 5 PM • (360) 527-8901



Semiahmoo Shore Model Home  
9454 Turnstone Lane East • Blaine, WA 98230