



A waterfront lifestyle like no other!

www.SemiahmooShore.com



STREET SIDE

9464 Turnstone Ln.

9462 Turnstone Ln.



WATERSIDE

9462 Turnstone Ln.

9464 Turnstone Ln.

40 9464 Turnstone Lane

Exterior

\$1,095,000*

Master bedrooms: 1

Den/Office: No

Other Bedrooms: 2

Bonus Room/Loft: No

Baths: 3.5

Upper Balcony: Yes

Approx. Sq. Ft.: 2,670

Fireplaces: 2

Levels: 2

2-Car Garage: Yes

Casita: Yes



SIDEVIEW

9464 Turnstone Ln.

#40 (9464)

*Prices subject to change. While every effort has been made to ensure the accuracy of this document, we are not responsible for any errors or omissions. Please verify all final information with your realtor.

Model Open Daily noon to 5 PM • **(360) 527-8901**



Semiahmoo Shore Model Home
9454 Turnstone Lane East • Blaine, WA 98230



A waterfront lifestyle like no other!
www.SemiahmooShore.com

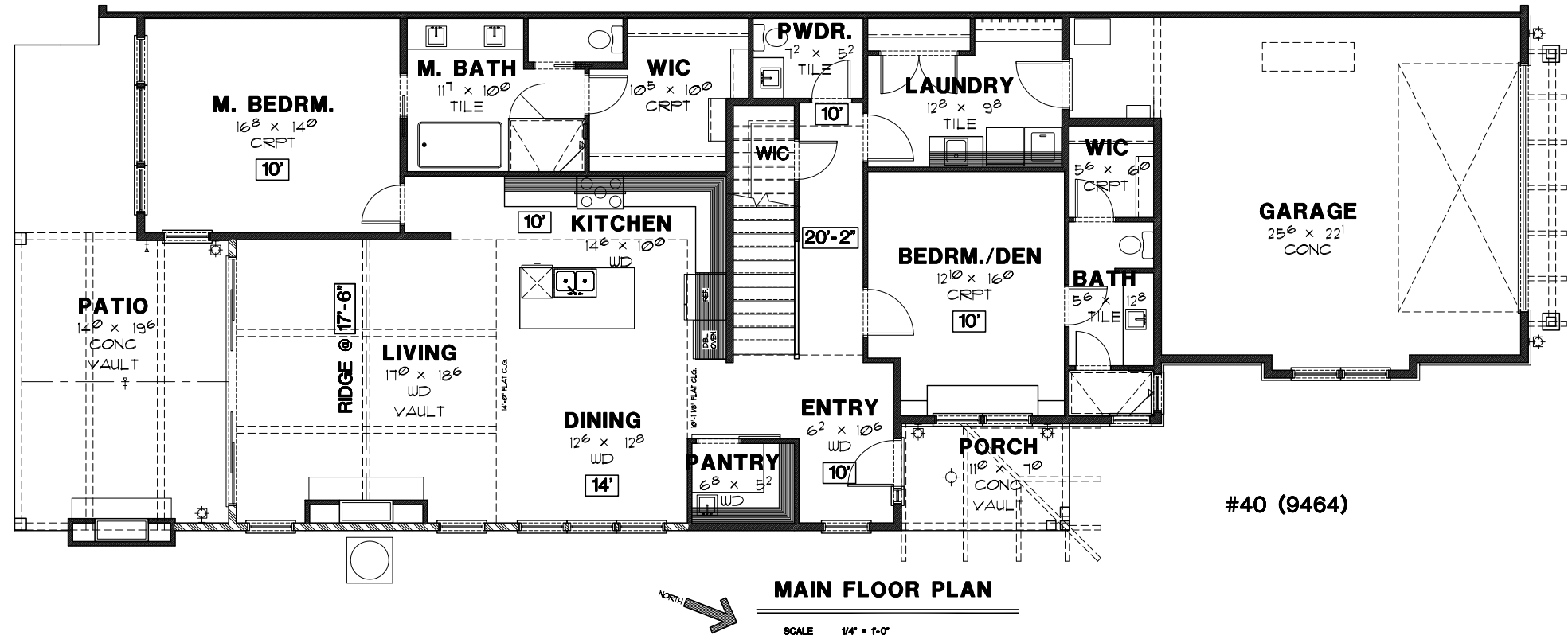
**40 9464 Turnstone Lane
Floor Plans**

SQUARE FOOTAGE

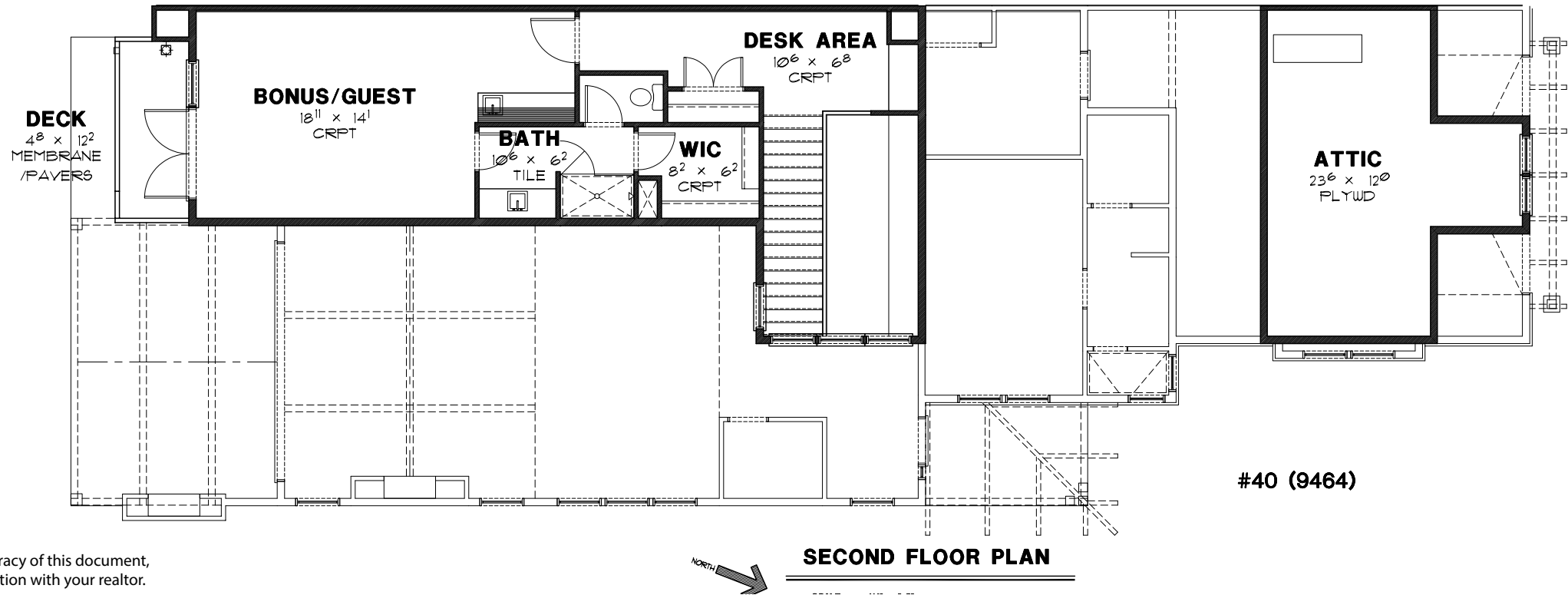
Main Floor: 2,003 S.F.
Second Floor: 667 S.F.

Total: 2,670 S.F.

Garage: 604 S.F.
Covered Patio: 414 S.F.



#40 (9464)



#40 (9464)

*Prices subject to change. While every effort has been made to ensure the accuracy of this document, we are not responsible for any errors or omissions. Please verify all final information with your realtor.

Model Open Daily noon to 5 PM • (360) 527-8901



Semiahmoo Shore Model Home
9454 Turnstone Lane East • Blaine, WA 98230