



A waterfront lifestyle like no other!

www.SemiahmooShore.com



STREET SIDE 9454 Turnstone Ln.

9452 Turnstone Ln.



WATERSIDE 9452 Turnstone Ln.

9454 Turnstone Ln.

38 9454 Turnstone Lane

Exterior

\$1,195,000*

Bedrooms: 3

Baths: 2.5

Approx. Sq. Ft.: 2,952

Levels: 2

Bonus Room/Loft: Yes

Upper Balcony: Yes

Fireplaces: 1

2-Car Garage: Yes



SIDEVIEW 9454 Turnstone Ln.

*Prices subject to change. While every effort has been made to ensure the accuracy of this document, we are not responsible for any errors or omissions. Please verify all final information with your realtor.

Model Open Daily noon to 5 PM • **(360) 527-8901**



Semiahmoo Shore Model Home
9454 Turnstone Lane East • Blaine, WA 98230



A waterfront lifestyle like no other!

www.SemiahmooShore.com

38 9454 Turnstone Lane Floor Plans

SQUARE FOOTAGE

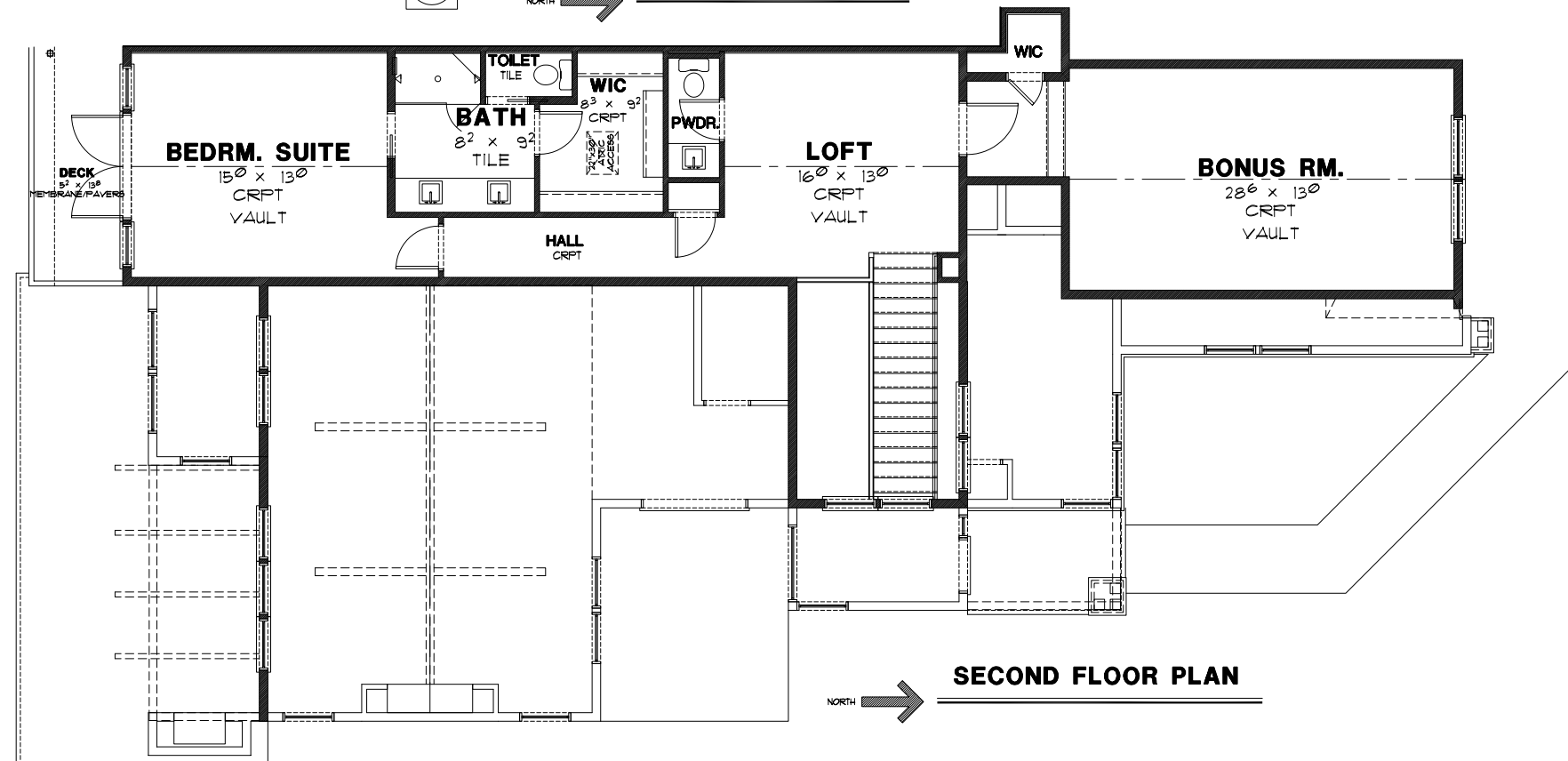
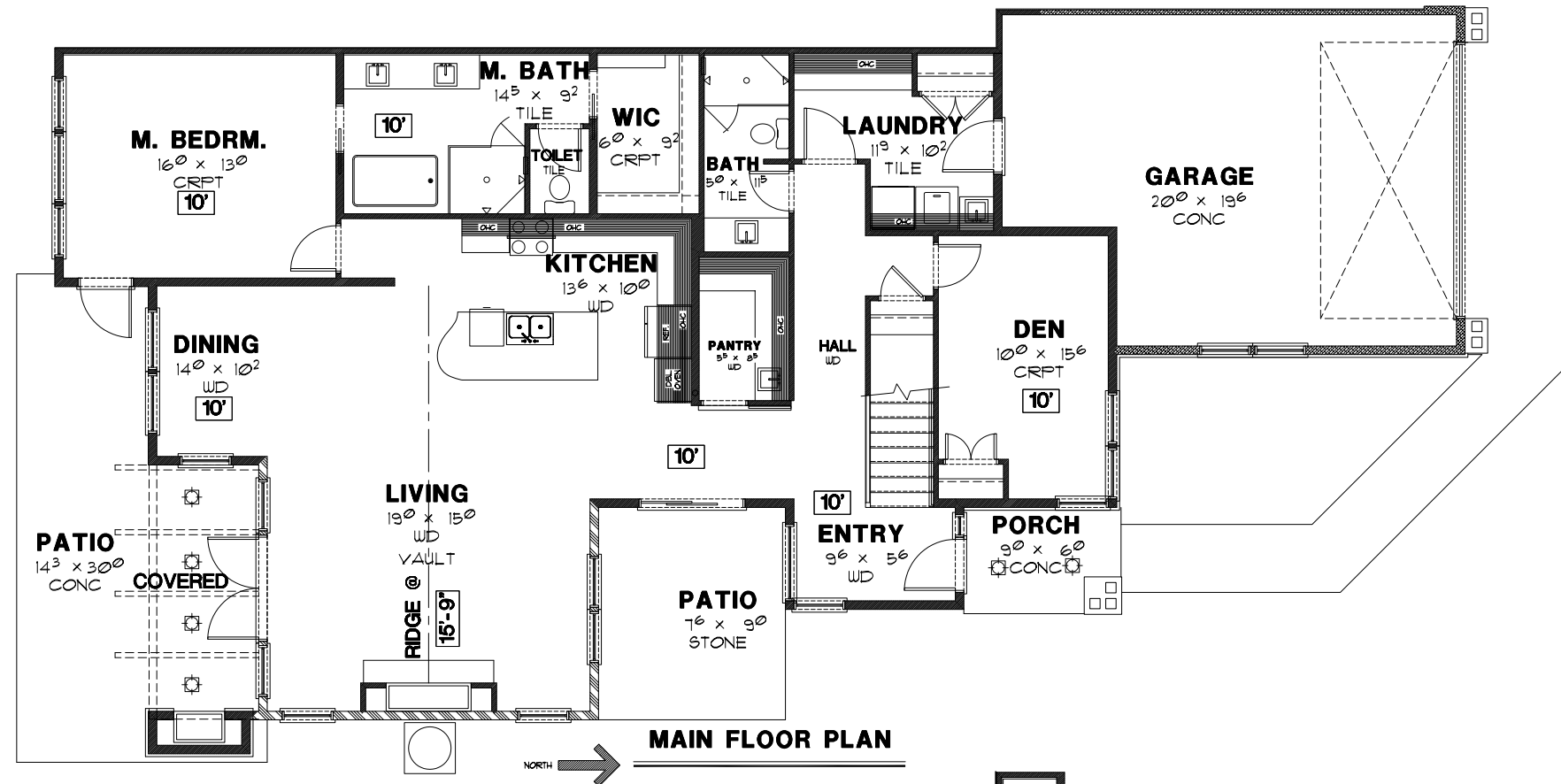
Main Floor: 1,846 S.F.

Second Floor: 1,106 S.F.

Total: 2,952 S.F.

Garage: 505 S.F.

Covered Patio: 152 S.F.



*Prices subject to change. While every effort has been made to ensure the accuracy of this document, we are not responsible for any errors or omissions. Please verify all final information with your realtor.

Model Open Daily noon to 5 PM • (360) 527-8901



Semiahmoo Shore Model Home
9454 Turnstone Lane East • Blaine, WA 98230