



A waterfront lifestyle like no other!

www.SemiahmooShore.com



STREET SIDE 9404 Turnstone Ln.



WATERSIDE 9402 Turnstone Ln.

9404 Turnstone Ln.

19 9402 Turnstone Lane
Cul de Sac
\$1,175,000*

Master Bedrooms: 1

Other Bedrooms: 2

Baths: 4.5

Approx. Sq. Ft.: 2,973

Levels: 2

Casitas: Yes

Den/Office: Yes

Bonus Room/Loft: No

Upper Balcony: Yes

Fireplaces: 2

2-Car Garage: Yes



SIDEVIEW 9402 Turnstone Ln.

*Prices subject to change. While every effort has been made to ensure the accuracy of this document, we are not responsible for any errors or omissions. Please verify all final information with your realtor.

Model Open Daily noon to 5 PM • **(360) 527-8901**



Semiahmoo Shore Model Home
9454 Turnstone Lane East • Blaine, WA 98230



A waterfront lifestyle like no other!

www.SemiahmooShore.com

**19 9402 Turnstone Lane
Floor Plans**

SQUARE FOOTAGE

Main Floor: 1,770 S.F.

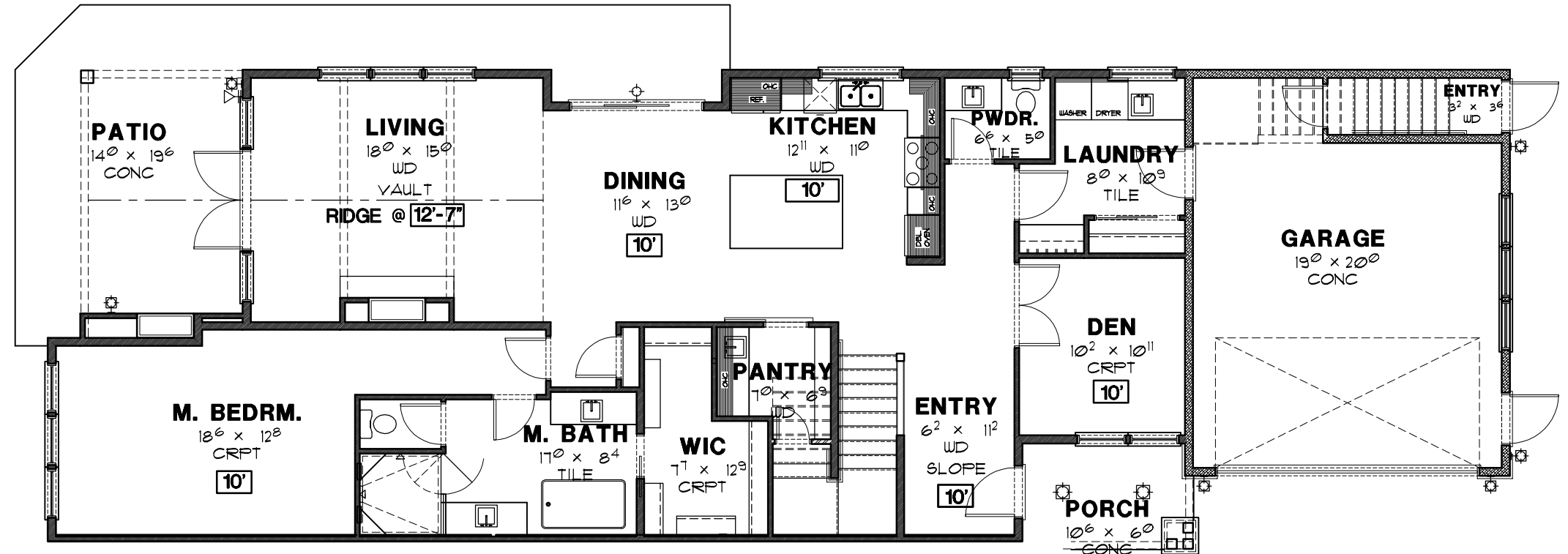
Second Floor: 735 S.F.

Casita 468 S.F.

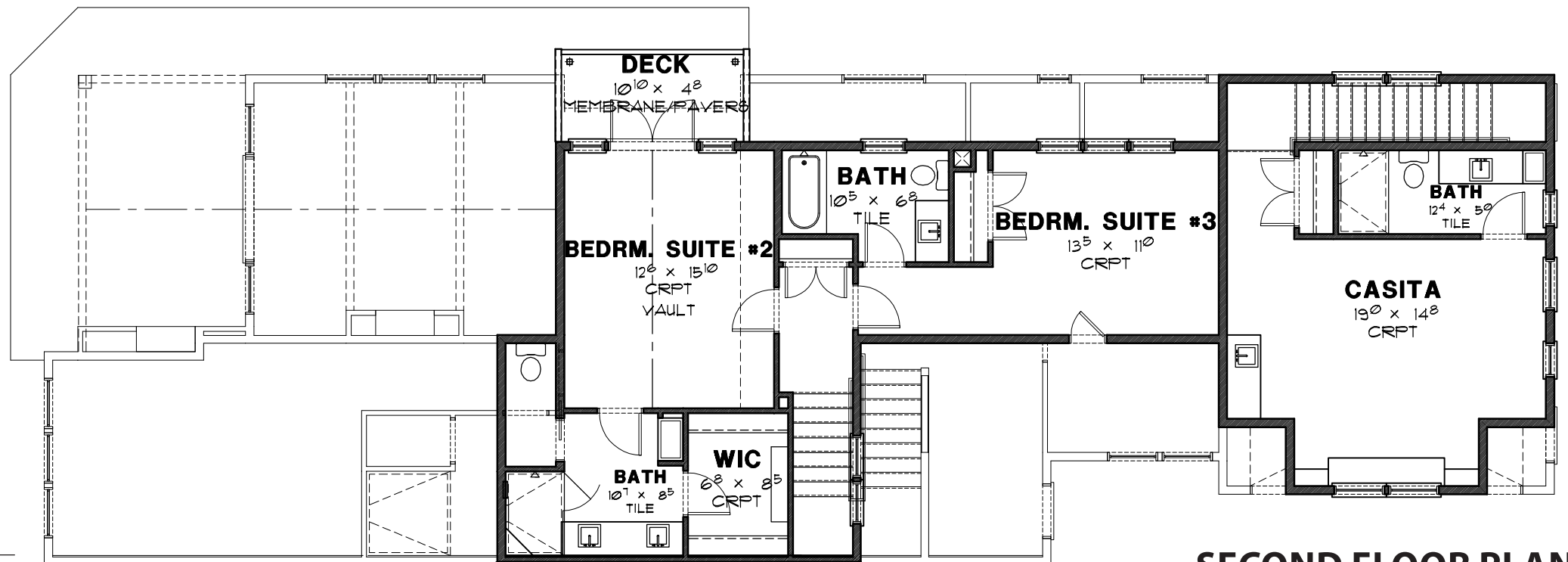
Total: 2,973 S.F.

Garage: 435 S.F.

Covered Patio: 266 S.F.



MAIN FLOOR PLAN



SECOND FLOOR PLAN

*Prices subject to change. While every effort has been made to ensure the accuracy of this document, we are not responsible for any errors or omissions. Please verify all final information with your realtor.

Model Open Daily noon to 5 PM • (360) 527-8901



Semiahmoo Shore Model Home
9454 Turnstone Lane East • Blaine, WA 98230