



A waterfront lifestyle like no other!

www.SemiahmooShore.com



**STREET SIDE** 9401 Turnstone Ln.

9403 Turnstone Ln.



**WATERSIDE** 9403 Turnstone Ln.

**9401 Turnstone Ln.**

**18 9401 Turnstone Lane**  
**Shoreline Unit**  
**\$1,200,000\***

Master Bedrooms: 1

Other Bedrooms: 2

Baths: 4.5

Approx. Sq. Ft.: 2,973

Levels: 2

Casitas: Yes

Den/Office: Yes

Bonus Room/Loft: No

Upper Balcony: Yes

Fireplaces: 2

2-Car Garage: Yes



**SIDVIEW** 9401 Turnstone Ln.

\*Prices subject to change. While every effort has been made to ensure the accuracy of this document, we are not responsible for any errors or omissions. Please verify all final information with your realtor.

Model Open Daily noon to 5 PM • **(360) 527-8901**



Semiahmoo Shore Model Home  
9454 Turnstone Lane East • Blaine, WA 98230



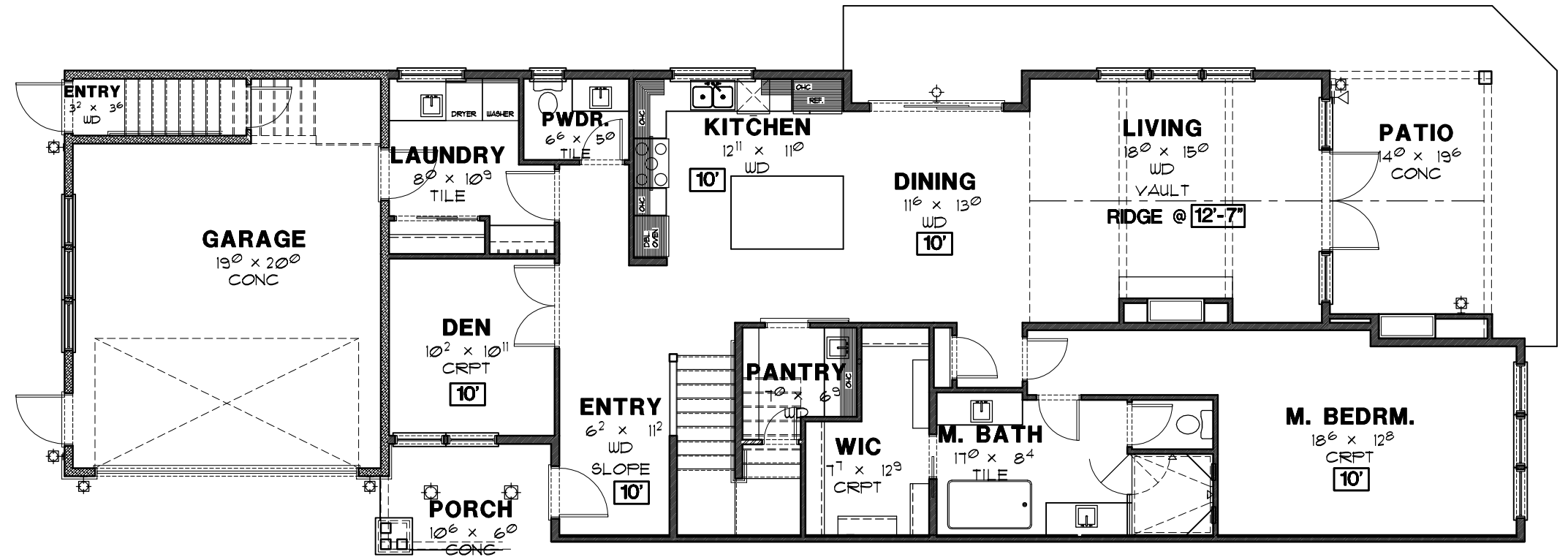
A waterfront lifestyle like no other!  
www.SemiahmooShore.com

**18 9401 Turnstone Lane  
Floor Plans**

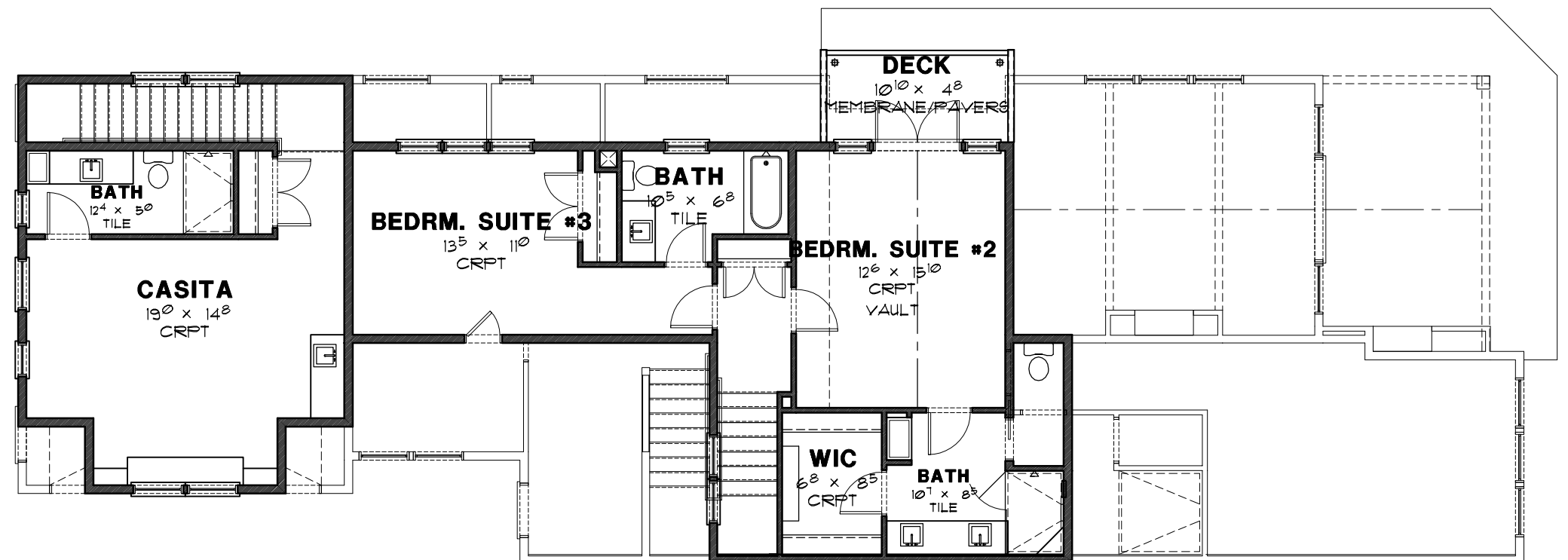
**SQUARE FOOTAGE**

Main Floor:	1,770 S.F.
Second Floor:	735 S.F.
Casita	468 S.F.
<b>Total:</b>	<b>2,973 S.F.</b>

Garage:	435 S.F.
Covered Patio:	266 S.F.



**MAIN FLOOR PLAN**



**SECOND FLOOR PLAN**

\*Prices subject to change. While every effort has been made to ensure the accuracy of this document, we are not responsible for any errors or omissions. Please verify all final information with your realtor.

Model Open Daily noon to 5 PM • (360) 527-8901



Semiahmoo Shore Model Home  
9454 Turnstone Lane East • Blaine, WA 98230