



A waterfront lifestyle like no other!

www.SemiahmooShore.com



STREET SIDE 9405 Turnstone Ln.

9407 Turnstone Ln.

WATERSIDE 9407 Turnstone Ln.

9405 Turnstone Ln.

15 9407 Turnstone Lane
Shoreline Unit
\$850,000*

- Master Bedrooms: 1
- Other Bedrooms: 2
- Baths: 3.0
- Approx. Sq. Ft.: 2,179
- Levels: 2
- Casitas: No
- Den/Office: No
- Bonus Room/Loft: No
- Upper Balcony: No
- Fireplaces: 2
- 2-Car Garage: Yes



SIDEVIEW 9407 Turnstone Ln.

*Prices subject to change. While every effort has been made to ensure the accuracy of this document, we are not responsible for any errors or omissions. Please verify all final information with your realtor.

Model Open Daily noon to 5 PM • **(360) 527-8901**



Semiahmoo Shore Model Home
9454 Turnstone Lane East • Blaine, WA 98230



A waterfront lifestyle like no other!

www.SemiahmooShore.com

**15 9407 Turnstone Lane
Floor Plans**

SQUARE FOOTAGE

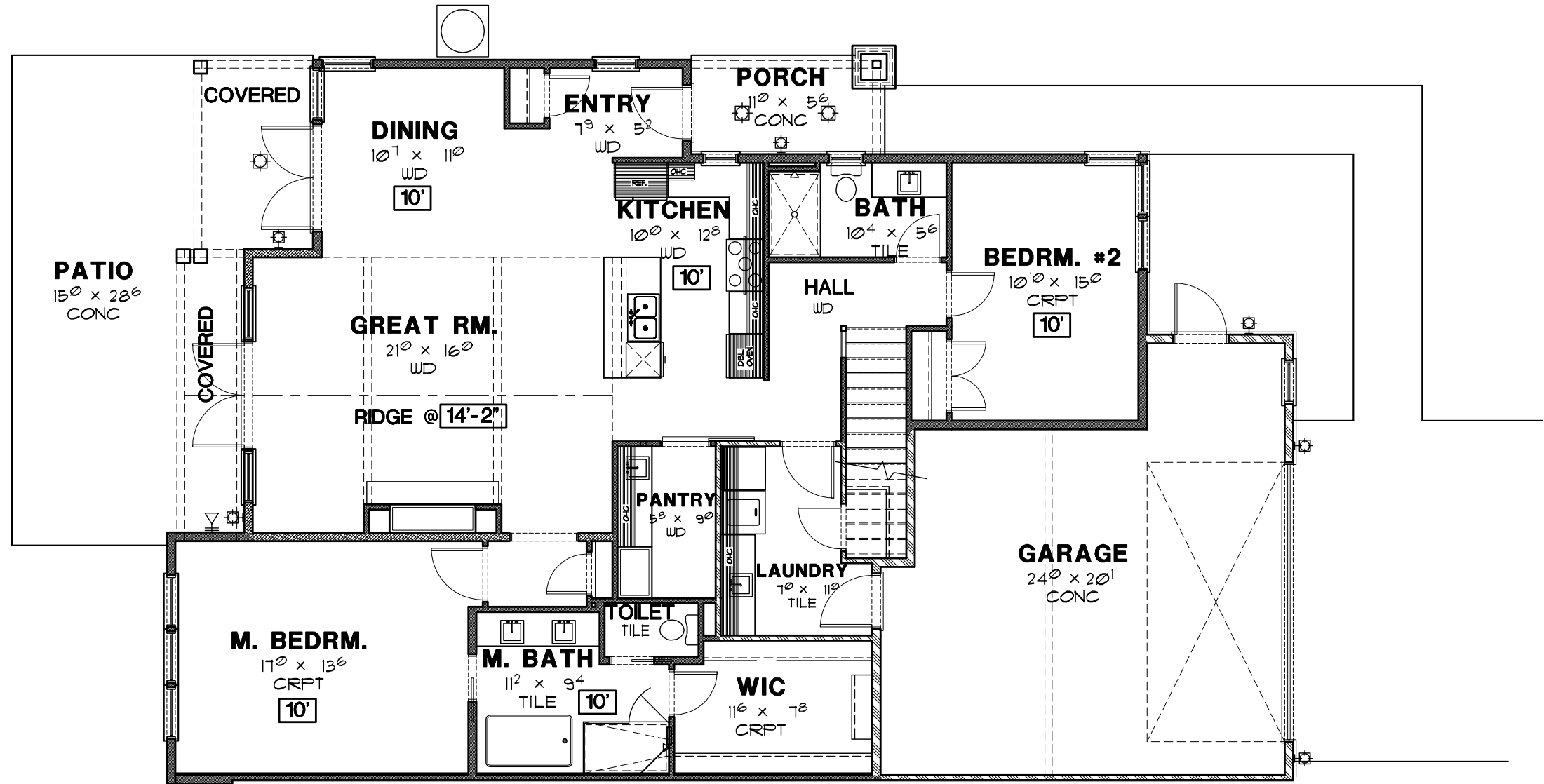
Main Floor: 1,779 S.F.

Second Floor: 400 S.F.

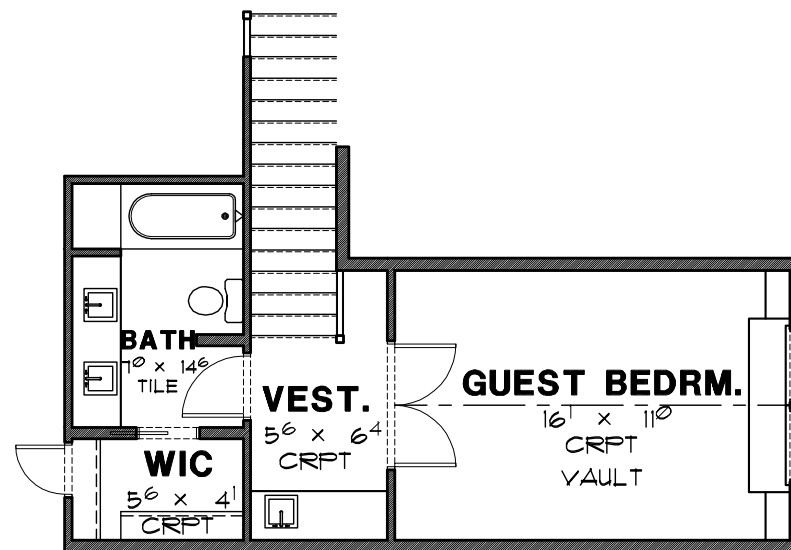
Total: 2,179 S.F.

Garage: 523 S.F.

Covered Patio: 201 S.F.



MAIN FLOOR PLAN



SECOND FLOOR PLAN

*Prices subject to change. While every effort has been made to ensure the accuracy of this document, we are not responsible for any errors or omissions. Please verify all final information with your realtor.

Model Open Daily noon to 5 PM • (360) 527-8901



Semiahmoo Shore Model Home
9454 Turnstone Lane East • Blaine, WA 98230