



A waterfront lifestyle like no other!

www.SemiahmooShore.com



STREET SIDE 9421 Turnstone Ln.

9423 Turnstone Ln.



WATERSIDE 9423 Turnstone Ln.

9421 Turnstone Ln.

8 9421 Turnstone Lane
Shoreline Unit
\$1,150,000*

Master Bedrooms: 2

Other Bedrooms: 0

Baths: 4.0

Approx. Sq. Ft.: 3,151

Levels: 2

Casitas: Yes - Connected

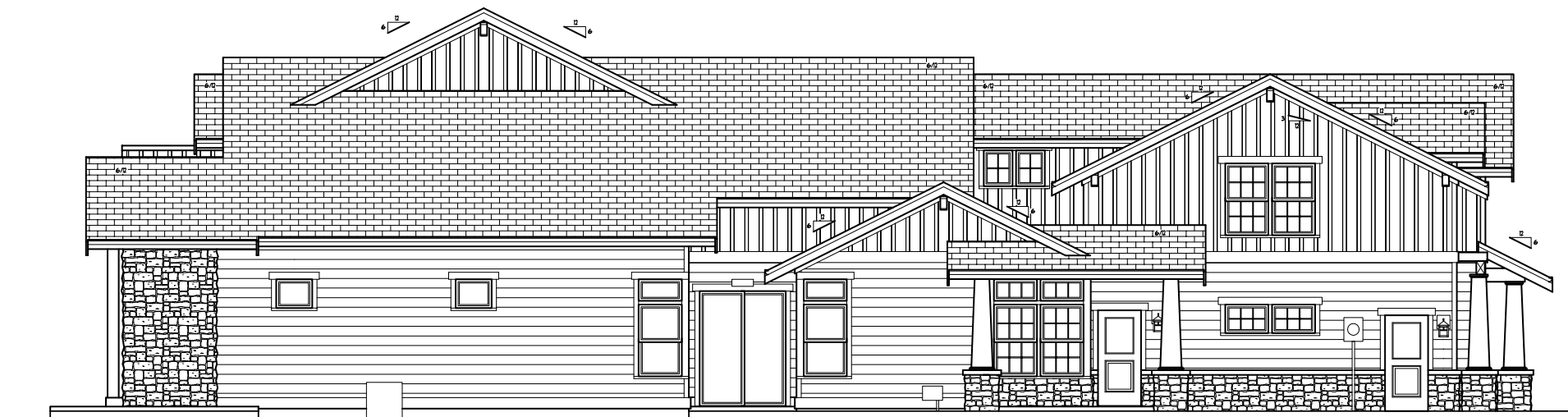
Den/Office: Yes

Bonus Room/Loft: No

Upper Balcony: Yes

Fireplaces: 2

2-Car Garage: Yes



SIDEVIEW 9421 Turnstone Ln.

*Prices subject to change. While every effort has been made to ensure the accuracy of this document, we are not responsible for any errors or omissions. Please verify all final information with your realtor.

Model Open Daily noon to 5 PM • **(360) 527-8901**



Semiahmoo Shore Model Home
9454 Turnstone Lane East • Blaine, WA 98230



A waterfront lifestyle like no other!

www.SemiahmooShore.com

8 9421 Turnstone Lane Floor Plans

SQUARE FOOTAGE

Main Floor: 1,851 S.F.

Second Floor: 851 S.F.

Casita: 449 S.F.

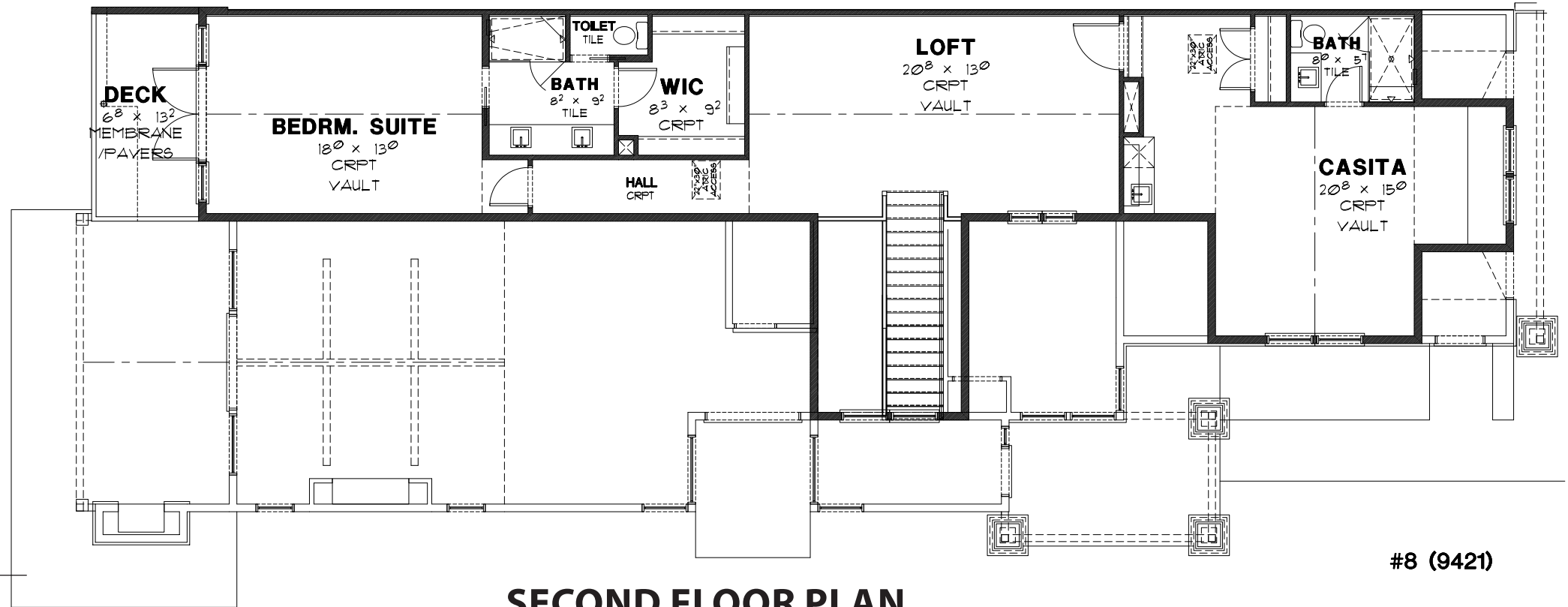
Total: 3,151 S.F.

Garage: 613 S.F.

Covered Patio: 332 S.F.



#8 (9421)



#8 (9421)

*Prices subject to change. While every effort has been made to ensure the accuracy of this document, we are not responsible for any errors or omissions. Please verify all final information with your realtor.

Model Open Daily noon to 5 PM • (360) 527-8901



Semiahmoo Shore Model Home
9454 Turnstone Lane East • Blaine, WA 98230