



A waterfront lifestyle like no other!

www.SemiahmooShore.com



STREET SIDE 9425 Turnstone Ln.

9427 Turnstone Ln.



WATERSIDE 9427 Turnstone Ln.

9425 Turnstone Ln.

5 9427 Turnstone Lane
Shoreline Unit
\$1,150,000*

Master Bedrooms: 2

Other Bedrooms: 1

Baths: 4.5

Approx. Sq. Ft.: 3,053

Levels: 2

Casitas: Yes

Den/Office: No

Bonus Room/Loft: No

Upper Balcony: Yes

Fireplaces: 2

2-Car Garage: Yes



SIDEVIEW 9427 Turnstone Ln.

*Prices subject to change. While every effort has been made to ensure the accuracy of this document, we are not responsible for any errors or omissions. Please verify all final information with your realtor.

Model Open Daily noon to 5 PM • **(360) 527-8901**



Semiahmoo Shore Model Home
9454 Turnstone Lane East • Blaine, WA 98230



A waterfront lifestyle like no other!
www.SemiahmooShore.com

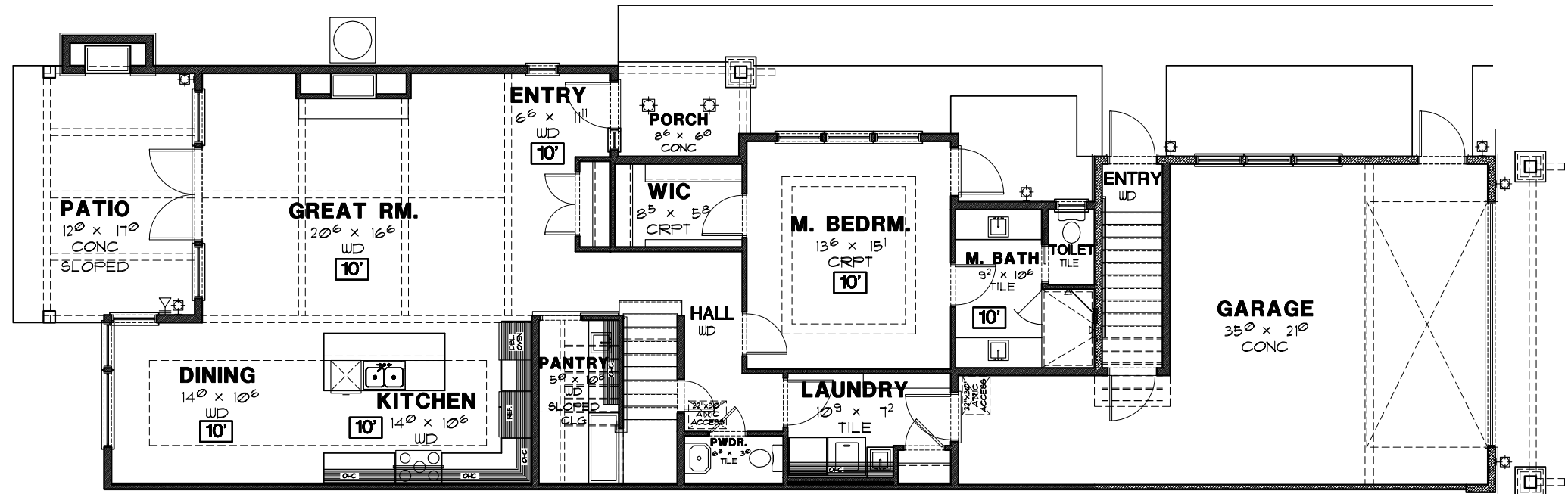
**5 9427 Turnstone Lane
Floor Plans**

SQUARE FOOTAGE

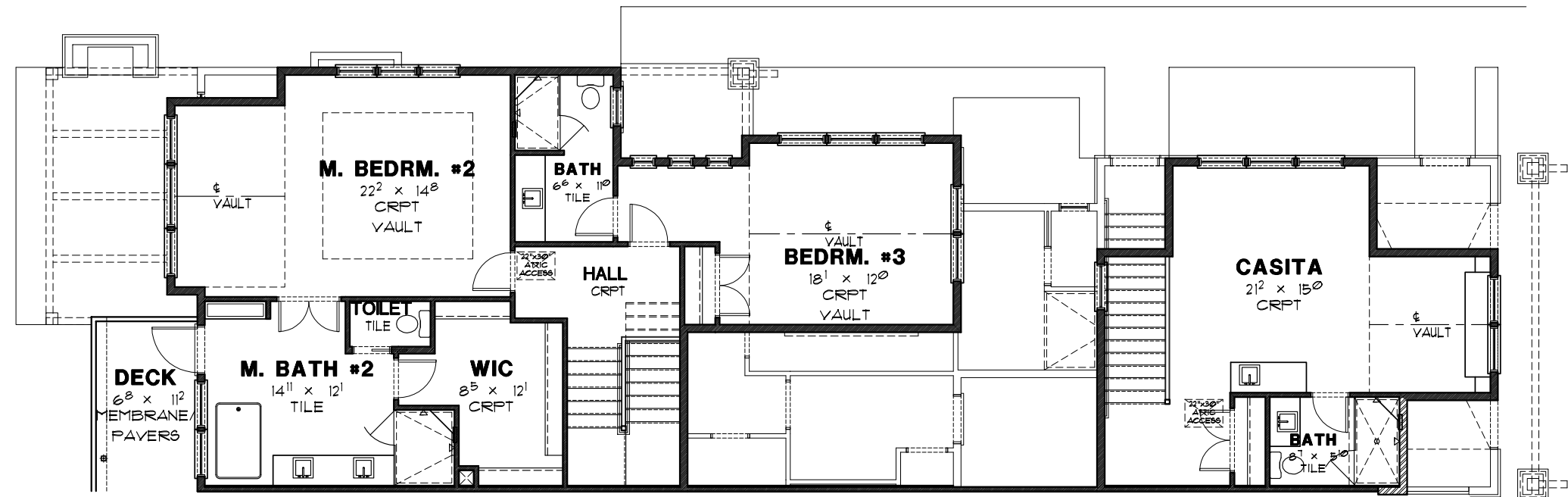
Main Floor: 1,472 S.F.
Second Floor: 1,083 S.F.
Casita: 498 S.F.

Total: 3,053 S.F.

Garage: 617 S.F.
Covered Patio: 214 S.F.



MAIN FLOOR PLAN



SECOND FLOOR PLAN

*Prices subject to change. While every effort has been made to ensure the accuracy of this document, we are not responsible for any errors or omissions. Please verify all final information with your realtor.

Model Open Daily noon to 5 PM • **(360) 527-8901**



Semiahmoo Shore Model Home
9454 Turnstone Lane East • Blaine, WA 98230