



A waterfront lifestyle like no other!

www.SemiahmooShore.com



**STREET SIDE 9433 Turnstone Ln.**

9435 Turnstone Ln.



**WATERSIDE 9435 Turnstone Ln.**

**9433 Turnstone Ln.**

**② 9433 Turnstone Lane  
Shoreline Unit  
\$1,150,000\***

Master Bedrooms: 2  
Other Bedrooms: 0  
Baths: 4.0  
Approx. Sq. Ft.: 3,097  
Levels: 2  
Casitas: Yes

Den/Office: Yes  
Bonus Room/Loft: No  
Upper Balcony: Yes  
Fireplaces: 2  
2-Car Garage: Yes



**SIDEVIEW 9433 Turnstone Ln.**

\*Prices subject to change. While every effort has been made to ensure the accuracy of this document, we are not responsible for any errors or omissions. Please verify all final information with your realtor.

Model Open Daily noon to 5 PM • (360) 527-8901



Semiahmoo Shore Model Home  
9454 Turnstone Lane East • Blaine, WA 98230



A waterfront lifestyle like no other!

www.SemiahmooShore.com

## ② 9433 Turnstone Lane Floor Plans

### SQUARE FOOTAGE

Main Floor: 1,851 S.F.

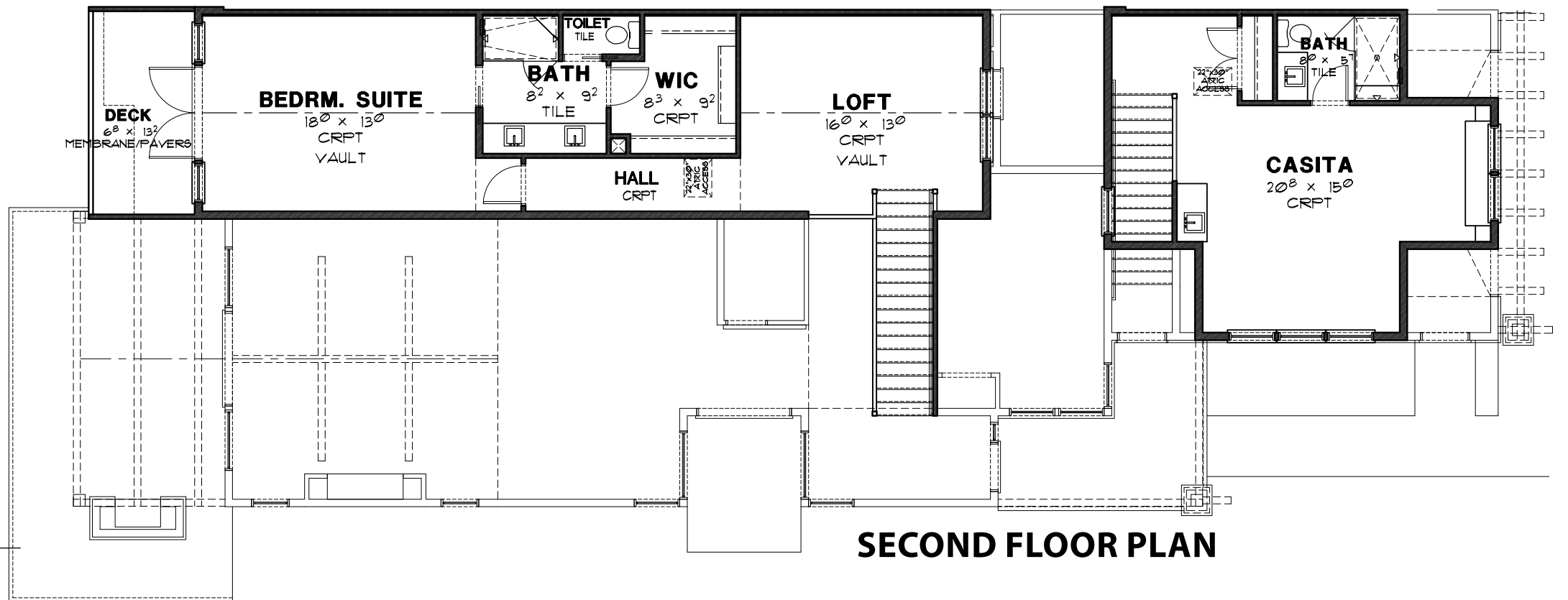
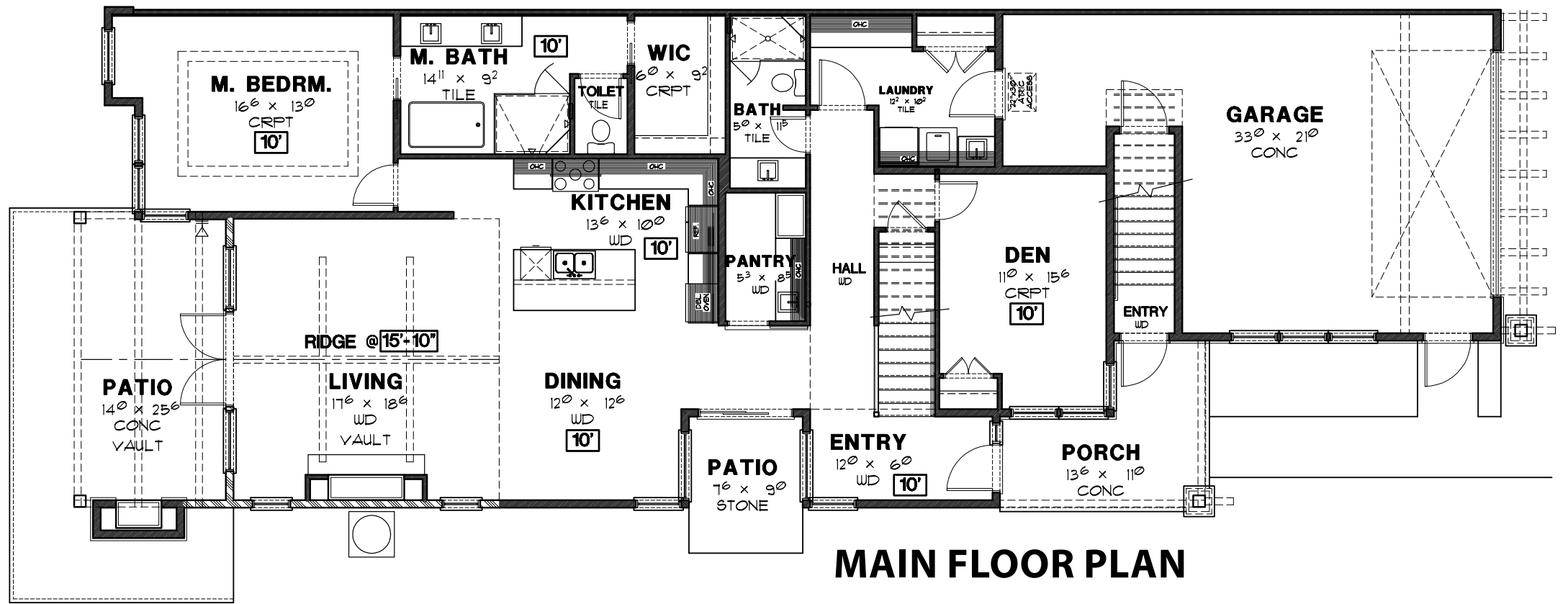
Second Floor: 753 S.F.

Casita: 493 S.F.

Total: 3,097 S.F.

Garage: 613 S.F.

Covered Patio: 303 S.F.



\*Prices subject to change. While every effort has been made to ensure the accuracy of this document, we are not responsible for any errors or omissions. Please verify all final information with your realtor.

Model Open Daily noon to 5 PM • (360) 527-8901



Semiahmoo Shore Model Home  
9454 Turnstone Lane East • Blaine, WA 98230